

Using Mobile BI: When and Where You Need It!

Session 12837

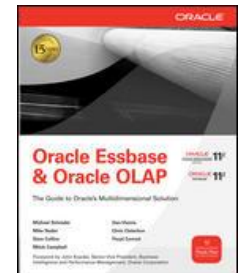
Chris Claterbos

Vlamis Software Solutions, Inc.



Vlamis Software Solutions

- Vlamis Software founded in 1992 in Kansas City, Missouri
- Developed more than 200 Oracle BI systems
- Specializes in ORACLE-based:
 - Data Warehousing
 - Business Intelligence
 - Design and integrated BI and DW solutions
 - Training and mentoring
- Expert presenter at major Oracle conferences
- www.vlamis.com (blog, papers, newsletters, services)
- Developer for IRI (former owners of Oracle OLAP)
- Co-author of book “Oracle Essbase & Oracle OLAP”
- Beta tester for OBIEE 11g
- Reseller for Simba and Nokia map data for OBIEE
- HOL Coordinator for BIWA Summit 2013



Presentation Agenda

- Introduction
- Mobile BI Overview
- Oracle's BI Option
- 3rd Party Options
- Oracle BI Demo
- Q & A



Mobile BI Considerations

- Target Audience
 - Executives | Managers | Workers
- User Experience
 - View | Analyze | Take Action
 - Disconnected?
- Security
 - Access | Data
- Development Effort
 - Low | Medium | High
- Architecture
 - App | Browser | Hybrid



Target Audience

- Who are the target audience?
 - Executives
 - Managers
 - Workers
- Which mobile BI functionality do they need?
 - Query Dashboards and Reports
 - Receive Alerts
 - Create or modify Reports
 - Save locally
- What do they desire of the system?
 - Speed
 - Simple to use
 - Same Reports as Non-Mobile



User Experience

- How will users interact with the system?
 - View Only
 - Perform Analysis
 - Take Action
- Which mobile devices will they use?
 - Only one type
 - Multiple types (smart phones and tablets)
- Which Platform?
 - Single (Apple or Android)
 - Multiple (Apple and Android)



Security

- What credentials will the user need to access the system?
 - Web SSO
 - VPN
 - Other
 - None
- Is the required security supported by Device?
 - Web based is generally easier
 - App Based can be difficult



Architecture

- Which architecture to choose?
 - Native Application
 - Browser
 - Hybrid
- What are pros and cons of the choice?
 - Scalability
 - Manageability
 - Development effort



Development Effort

- What's the level of effort required to?
 - Develop new content
 - Enable existing content
- Are skills and tools required for mobile vs. web development?
 - Same
 - Different
- Is there any BI content available out-of-the-box?
 - Build
 - Buy



Oracle's Solution

Oracle Business Intelligence Mobile

- Built on OBIEE 11g
- Optimized for smartphone and tablets
- Apple iPhone, iPad and iPod
- Zero training to interact with data on mobile devices
- OBIEE Security Model
- SSL, SSO, VPN




Time Hierarchy	Brand	Revenue
Total Time	BitTech	21000000.00
	FunPod	17500000.00
	HomeView	11500000.00
2008	BitTech	6990740.76
	FunPod	5723187.40
	HomeView	3786071.84
2009	BitTech	6302087.48
	FunPod	5160339.85
	HomeView	3537572.67
2010	BitTech	7707171.76
	FunPod	6616472.75
	HomeView	4176355.40



Lower TCO through Content Reuse

- Reuse of OBIEE content
 - Dashboards
 - Analyses
 - BI Publisher Reports
 - Actions
 - Agents
 - Guided Navigation and more



Enhanced for Smartphones and Tablets

- Gestural interactions
- Orientation Recognition
- Optimized Layouts



Oracle BI Mobile Functionality

- Recent History
- List of Dashboards
- Favorites
- Local off-site saving
- Email of content supported
- Printing
- Search



Today .. 11.1.1.7!

- Easily connect to an OBIEE environment
- View reports, dashboards, alerts, and scorecards
- No special configurations required for charting and maps
- “Wrapper” application with touch UI around a web viewer
- Option to reorient dashboard layout for a simpler “mobile” view
- iOS support only (iPad/iPhone)
- Included with BI Foundation License; separate charge otherwise



Some 3rd Party Options

- Roambi
- SurfBI

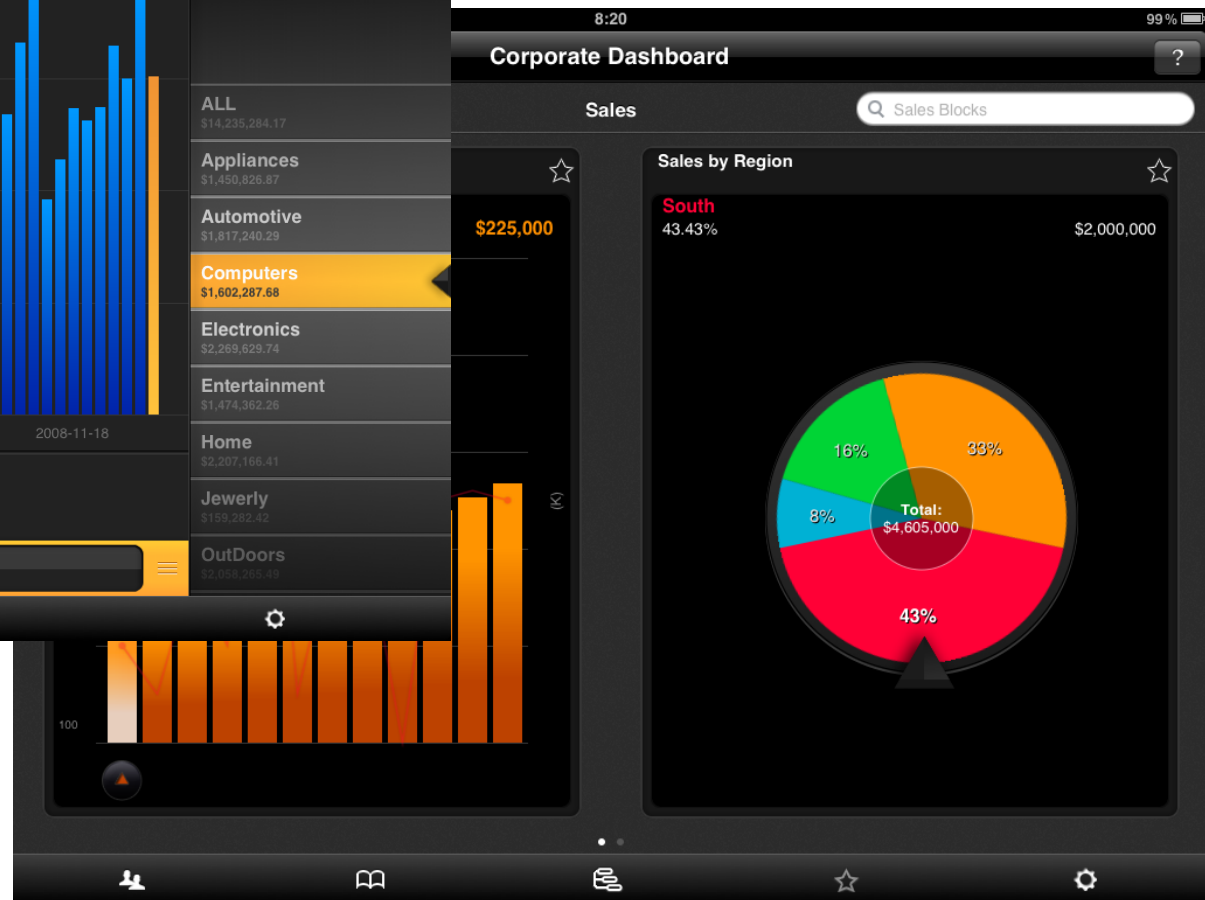
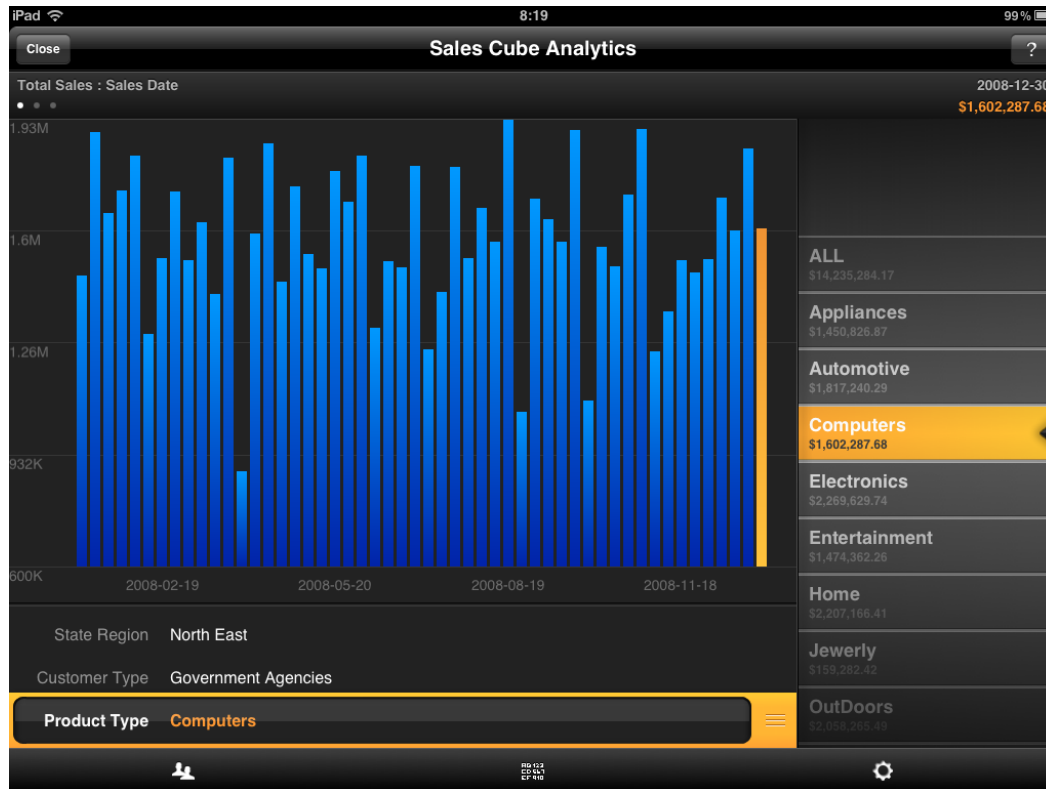


Roambi

- 7 view types designed for multi-touch UI
Blink, Cardex, CataList, Elements, Layers, PieView, Squares, SuperList, Trends
- Data is fed into a publisher utility to create the views
- Enterprise server can connect to OBIEE 11g, Essbase, data files, and other BI tools
- Once a view is created, data can be refreshed on the device using the enterprise server
- Data is stored locally in a secure fashion
- Apple iOS only



Roambi - Examples



Roambi - Examples



Roambi Create Content

- Publish BI Content in Book or Presentation Modes
- Include in Standard Roambi Views
- Convert PowerPoint and Keynote
- Integrate PDF, Text, Graphics, Video
- Viewer App for Secure Distribution

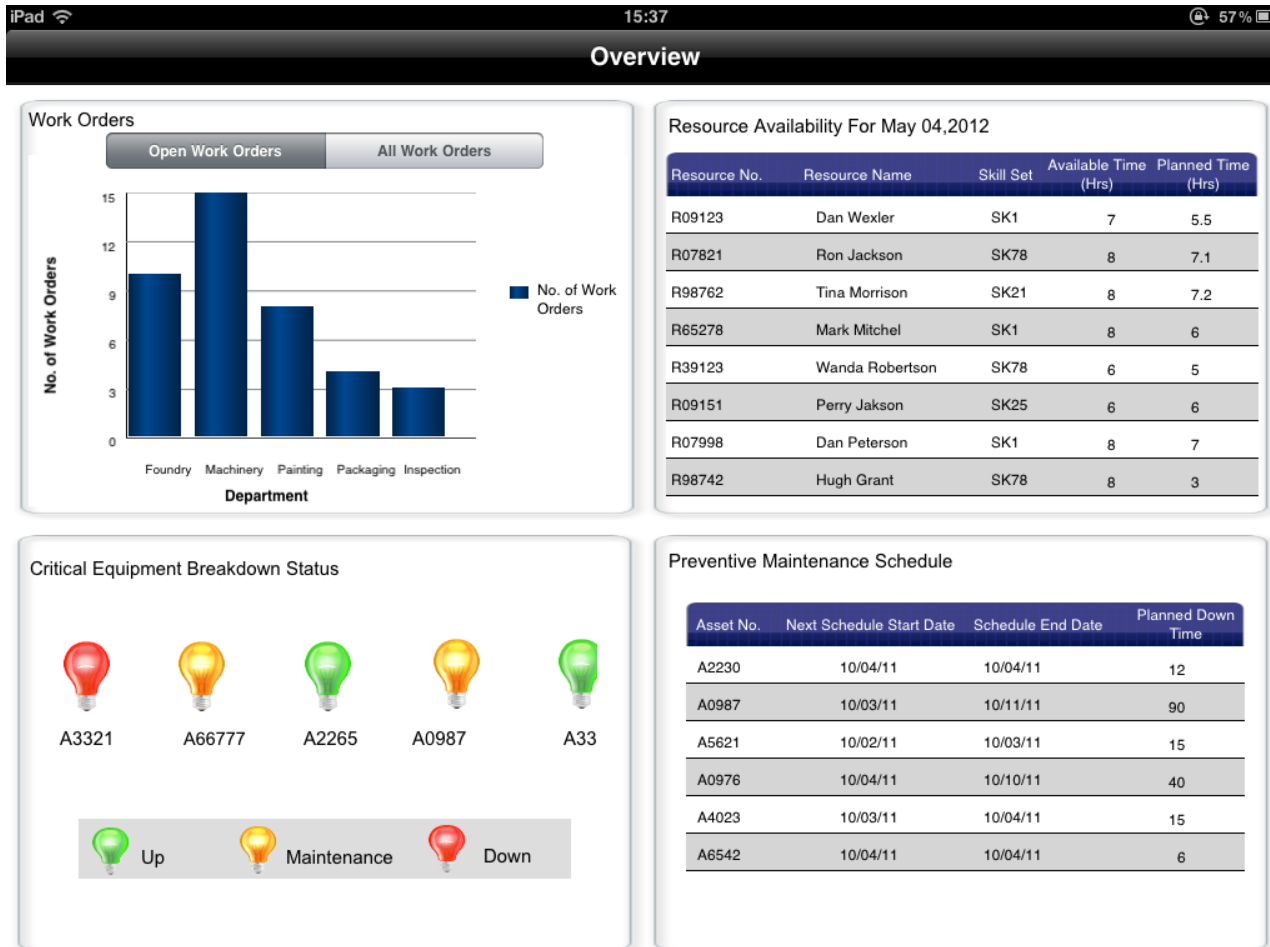


SurfBI

- Creates 'mobile' dashboard from OBIEE dashboard components
- Reads OBIEE catalog to generate new app widgets with multi-touch UI
- Contains additional widgets that can be built from existing data feeds
- Online and offline modes (with remote wipe)
- iOS and Android
- OBIEE 10g/11g + Other
- Lightweight write-back for supported ERP sources
- "Image BI"
- Voice command (supported devices)
- GPS & camera integration
- Collaboration (FaceTime, Jabber, Webex)



SurfBI - Dashboard



SurfBI – Image BI



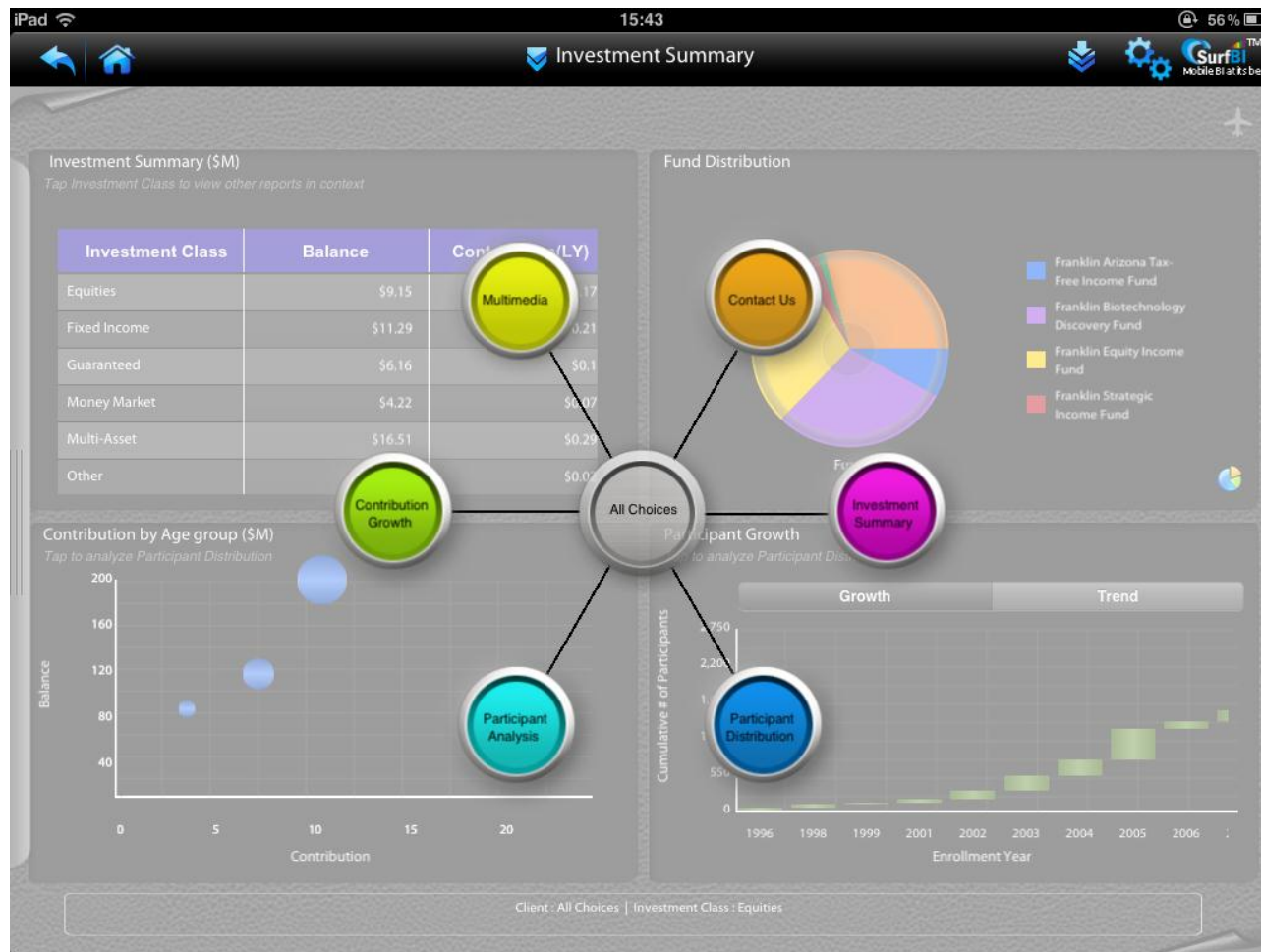
Image BI allows metrics to be seen in context of the real world



SurfBI - Pop-out Prompts



SurfBI - Custom Navigations



Oracle BI HD Demo



COLLABORATE13
TECHNOLOGY AND APPLICATIONS FORUM
FOR THE ORACLE COMMUNITY

Questions?



COLLABORATE13
TECHNOLOGY AND APPLICATIONS FORUM
FOR THE ORACLE COMMUNITY

Using Mobile BI: When and Where You Need It!

Session 12837

Chris Claterbos

Vlamis Software Solutions, Inc.

