

New Features in Data Visualization Desktop 12.2.2 and OBIEE 12.2.1.2

Dan VlamiS and Arthur Dayton

VlamiS Software Solutions, @vlamissoftware, 816-781-2880

www.vlamiS.com

dvlamis@vlamiS.com, @dvlamis

adayton@vlamiS.com, @arthurdayton116

VlamiS Software Solutions

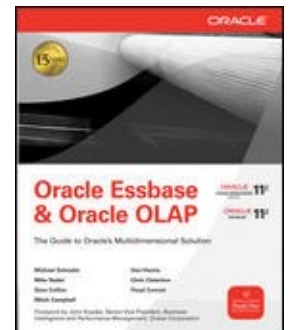
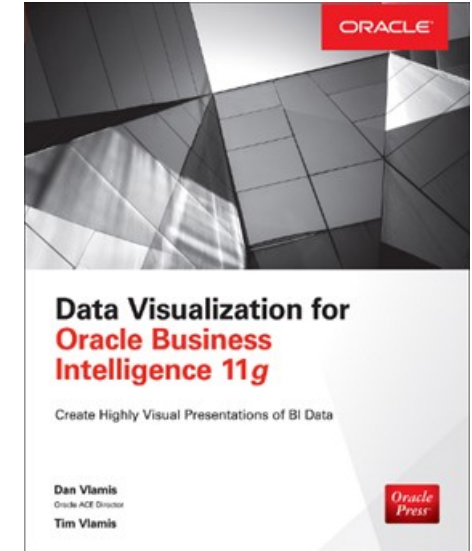
- VlamiS Software founded in 1992 in Kansas City, Missouri
- Developed 200+ Oracle BI and analytics systems
- Specializes in Oracle-based:
 - Enterprise Business Intelligence & Analytics
 - Analytic Warehousing
 - Data Mining and Predictive Analytics
 - Data Visualization
- Multiple Oracle ACEs, consultants average 15+ years
- www.vlamiS.com (blog, papers, newsletters, services)
- Authored book “Data Visualization for Oracle BI”
- Co-authors of book “Oracle Essbase & Oracle OLAP”
- Oracle University Partner
- Oracle Gold Partner

 EDUCATION RESELLER

 APPROVED
EDUCATION CENTER

 Gold
Partner

Specialized
Oracle Business Intelligence
Foundation Suite 11g





OBIEE and BICS New Features Webcasts

- 11.1.1.3 (August 2010)
 - Huge release with major new functionality
- 11.1.1.5 (May 2011)
 - BIWA TechCast May 25: [Oracle BI 11.1.1.5 - New Features](#)
- 11.1.1.6 (February 2012)
 - BIWA TechCast Feb 29: [Oracle BI 11.1.1.6 New Features](#)
 - New features mostly for Exalytics
- 11.1.1.6.2 and 11.1.1.6.2 BP1 (May 2012 and June 2012)
 - BIWA TechCast Aug 1: [Oracle BI 11.1.1.6.2 BP1 New Features](#)
 - BI Mobile rewrite
 - Trellis Views
- 11.1.1.7 (April 2013)
 - BIWA TechCast Apr 5 [Oracle BI 11.1.1.7 New Features](#)
 - Freeze headers/scroll bars for tables and pivot tables
 - View content in SmartView in Excel and enhanced export
 - New Oracle R Enterprise (ORE) integration and capabilities
- 11.1.1.9 (May 2015)
 - BIWA TechCast Jun 4, 2015 [Oracle BI 11.1.1.9 New Features](#)
 - Search in Subject Areas pane
 - New Treemap view
 - Global variables and Save Column As choice in Criteria tab
- 12.2.1 (October 2015)
 - BIWA TechCast Nov 19, 2015 [Oracle BI 12.2.1 New Features](#)
 - Alta UI Skin, new home page
 - Visual Analyzer and Data Mashup
- BICS March 2016 (March 2016)
 - Webcast Apr 5, 2016 BICS [BICS March 2016 New Features](#)
- 12.2.1.1 (June 2016)
 - BIWA TechCast Jul 19, 2016 [Oracle BI 12.2.1.1 New Features](#)
 - New Visualizations in VA
 - Dashboard Subpages
 - New Data Wrangling features
 - BI Publisher and MapViewer enhancements

All listed on website at <http://www.vlamiS.com/obiwebinars/>



Use Questions or Chat or Questions to communicate

Oracle Business Intelligence Webinars

Presentations

Presentations 2017
Presentations 2016
Presentations 2015
Presentations 2014
Presentations 2013
Presentations 2012
Presentations 2011
Presentations 2010
Presentations 2009
Presentations 2008
Presentations 2007
Presentations 2006
Presentations 2005
Presentations 2004
Presentations 2003
Presentations 2002
Presentations 2001

Oracle Business Intelligence Webinars

2016

- 12.2.2 (October 2016 Release, [Registration NOW OPEN](#))
 - [Webcast November 22: DVD 12.2.2 and OBIEE 12.2.1.2. New Features](#)
 - 25+ new data sources
 - Printing, email and export to pdf and PowerPoint options
- 12.2.1.1 (June 2016 Release)
 - [BIWA TechCast July 19: Oracle BI 12.2.1.1 New Features](#)
 - New Visualizations in VA
 - Dashboard Subpages
 - New Data Wrangling features
 - BI Publisher and MapViewer enhancements
- BICS (March 2016 Release)
 - [Webcast April 5: New Release of BI Cloud Services \(BICS\)](#)

2015

- 12.2.1 (October 2015 Release)

File Options View Help

In Practice Mode [Start](#)

Audience view 100%

Sharing
Stopped No one sees your screen

Show Screen Stop Showing Screen Give Keyboard & Mouse Change Presenter

Start Recording 5.9 GB remaining [Settings](#)

Audio
[View audio options](#)

Questions

☒ Show Answered Questions

X	Question	Asker

[Send Privately](#) [Send to All](#)

Chat

[Me \(to All - Entire Audience\):](#)
12:53 PM: Test chat here

All - Entire Audience [Send](#)

Seeing is Believing
Webinar ID: 641-563-843
GoToWebinar

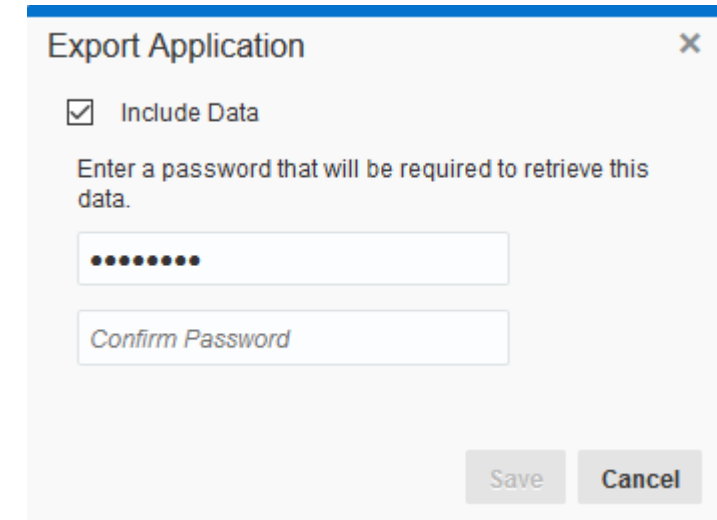
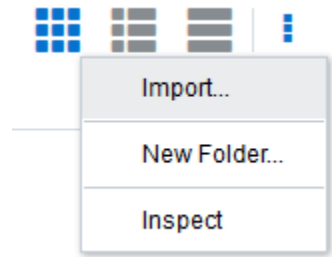


High Level List of New Features

- OBIEE 12.2.1.2
 - SSO for Visual Analyzer
 - Import / Export DVA files
 - Bug fixes
- DVD 2.0 (internally 12.2.2)
 - More Data sources and Data flows, profiling
 - BI Ask
 - Filtering options
 - Multiple Canvases
 - Export & Printing
 - New Visualizations and SDK for build your own


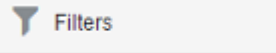


Import and Export of .dva files in OBIEE





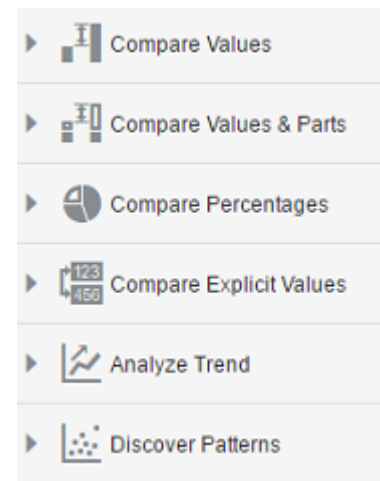
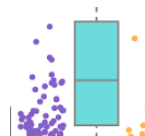
DVD 12.2.2 (called DVD 2.0) New Features

- Additional data sources
- Filter on data sources to cut down on data volume
- Data Flows allow for manipulation of data on server; download to PC
- Data Profiling – get histogram of data by row count or measure
- Control types of columns – measure vs attribute
- BI Ask – type “State Revenue Bar Chart United States”
- Delay applying filters (lightning bolt at bottom) 
- Apply filters to individual visualizations 
- Use Master visualization to filter Detail visualization
- Multiple canvases and list visualization – like dashboard prompts



DVD 12.2.2 New Features

- Choose visualization by objective
- New Visualizations
 - Chord
 - Network
 - Sankey
 - Tree
 - Timeline
 - Parallel Coordinates
- SDK to create visualizations (code yourself)
 - For example, Boxplot
 - Others shared at BI Public Store
- Control over color palette
 - Highlight specific value
 - Make areas visually distinct
- Print, Export to PDF and PPT
 - Select pages to include



BIWA SUMMIT 2017 WITH SPATIAL SUMMIT + YESSQL SUMMIT

THE Big Data + Analytics + Spatial + Cloud + IoT + Everything Cool User Conference
January 31 - February 2, 2017

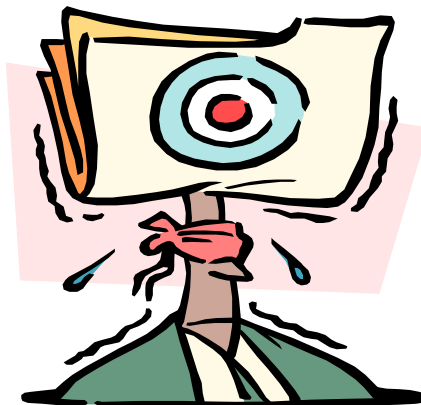
REGISTER NOW



www.biwasummit.org



Resources and Questions?



Dan Vlami

Email: dvlamis@vlamis.com

Twitter: @dvlamis

Phone (816) 781-2880

Vlami Software Solutions

Twitter: @vlamissoftware

Vlami Home page www.vlami.com Blog www.vlami.com/blog

Test Drive www.vlami.com/td Prior OBIEE releases www.vlami.com/papers

Oracle BI SampleApp v607 and Resources (August 16, 2016!) <http://www.vlami.com/papers2016/#aug16>

BI Public Store with plugins <https://sites.google.com/site/oraclebipublicstore/downloads>

Sample App What's New <http://www.oracle.com/technetwork/middleware/bi-foundation/obiee-samples-167534.html>

YouTube channel BI Tech Demo from SampleApp Team <https://www.youtube.com/user/OracleBITechDemos>

Fusion Middleware 12c Documentation <http://docs.oracle.com/middleware/1221/bisuite/index.html>

BICS Demo as part of OTN Summit <http://www.vlami.com/papers2016/#jul12>

BIWA Summit 2017 Conference <http://www.biwasummit.org>



Improve All Data with Powerful Data Prep

Data Flows

- You can use data flows to produce curated data sources that you can use to create visualizations.

The screenshot displays the Vlami Data Prep interface. At the top, a data flow diagram shows the process: 'Sample Order...' and 'Sample State...' are joined, then columns are selected and aggregated. This result is then joined with the 'CUSTOMERS' dataset before being saved. Below the diagram, a 'Preview' tab shows a table of data.

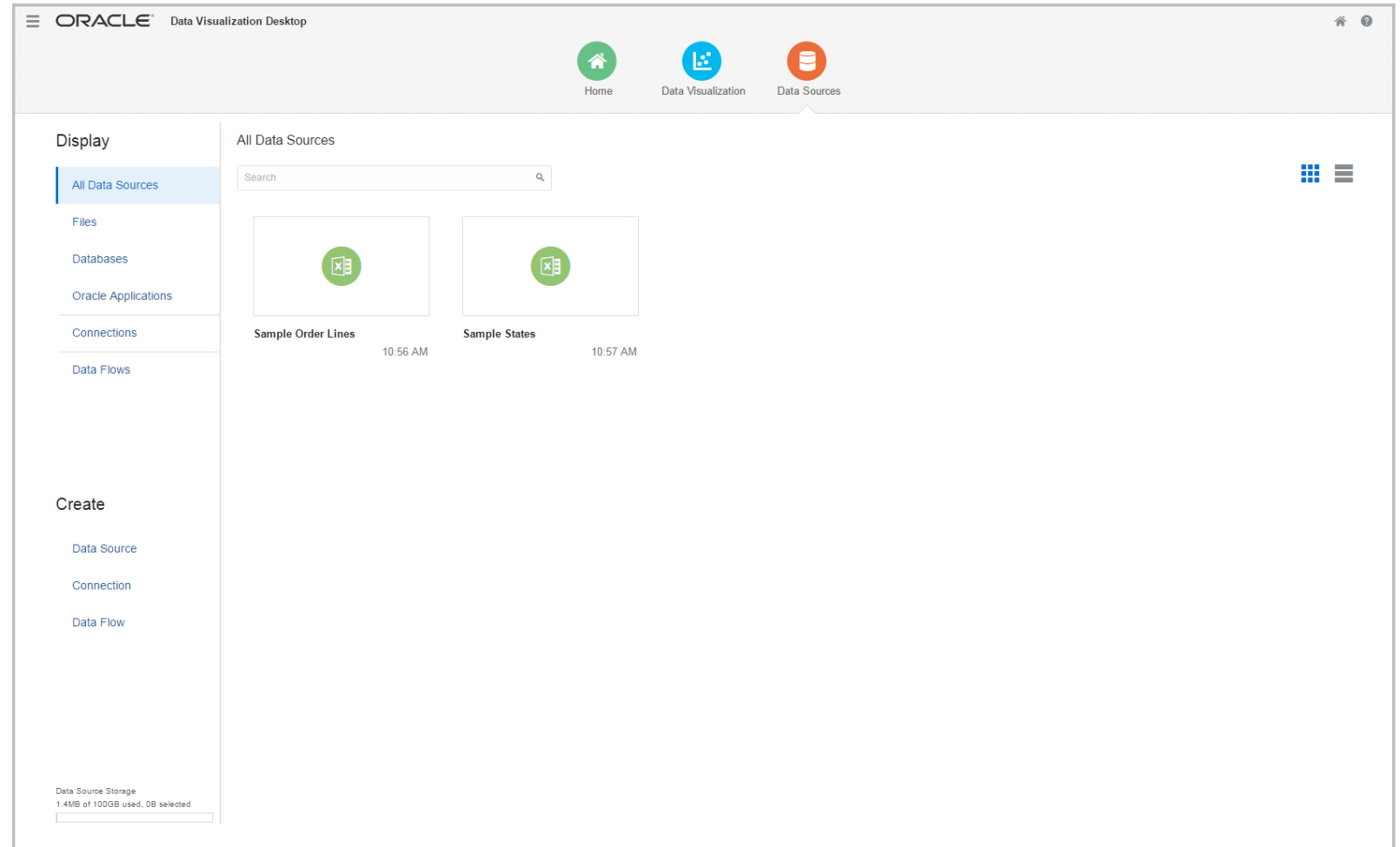
CUST_FIRST_NAME	CUST_CITY	CUST_CITY_ID	City	State	Postal_Code	Country	Latitude	Longitude	Continent	Region	Order Line ID	Order ID	O
Emmet	Adelaide	51,045.00	Adelaide	South Australia	AU101679	Australia	-34.93	138.60	Oceania	Australia and New Zealand	1001	88934	Not S
Emmet	Adelaide	51,045.00	Adelaide	South Australia	AU101679	Australia	-34.93	138.60	Oceania	Australia and New Zealand	1002	88934	Not S
Emmet	Adelaide	51,045.00	Adelaide	South Australia	AU101679	Australia	-34.93	138.60	Oceania	Australia and New Zealand	1005	88931	High
Emmet	Adelaide	51,045.00	Adelaide	South Australia	AU101679	Australia	-34.93	138.60	Oceania	Australia and New Zealand	1006	90342	Medi
Emmet	Adelaide	51,045.00	Adelaide	South Australia	AU101679	Australia	-34.93	138.60	Oceania	Australia and New Zealand	1008	90342	Medi
Emmet	Adelaide	51,045.00	Adelaide	South Australia	AU101679	Australia	-34.93	138.60	Oceania	Australia and New Zealand	1034	86395	Not S
Emmet	Adelaide	51,045.00	Adelaide	South Australia	AU101679	Australia	-34.93	138.60	Oceania	Australia and New Zealand	1037	86383	Medi
Emmet	Adelaide	51,045.00	Adelaide	South Australia	AU101679	Australia	-34.93	138.60	Oceania	Australia and New Zealand	1047	86392	High
Emmet	Adelaide	51,045.00	Adelaide	South Australia	AU101679	Australia	-34.93	138.60	Oceania	Australia and New Zealand	1058	89325	Low
Emmet	Adelaide	51,045.00	Adelaide	South Australia	AU101679	Australia	-34.93	138.60	Oceania	Australia and New Zealand	1059	89326	Medi
Emmet	Adelaide	51,045.00	Adelaide	South Australia	AU101679	Australia	-34.93	138.60	Oceania	Australia and New Zealand	1060	89321	Not S
Emmet	Adelaide	51,045.00	Adelaide	South Australia	AU101679	Australia	-34.93	138.60	Oceania	Australia and New Zealand	1069	87810	Low
Emmet	Adelaide	51,045.00	Adelaide	South Australia	AU101679	Australia	-34.93	138.60	Oceania	Australia and New Zealand	1085	87906	Medi
Emmet	Adelaide	51,045.00	Adelaide	South Australia	AU101679	Australia	-34.93	138.60	Oceania	Australia and New Zealand	1090	87707	Low
Emmet	Adelaide	51,045.00	Adelaide	South Australia	AU101679	Australia	-34.93	138.60	Oceania	Australia and New Zealand	1103	88481	Not S
Emmet	Adelaide	51,045.00	Adelaide	South Australia	AU101679	Australia	-34.93	138.60	Oceania	Australia and New Zealand	1104	88481	Not S
Emmet	Adelaide	51,045.00	Adelaide	South Australia	AU101679	Australia	-34.93	138.60	Oceania	Australia and New Zealand	1115	90698	High
Emmet	Adelaide	51,045.00	Adelaide	South Australia	AU101679	Australia	-34.93	138.60	Oceania	Australia and New Zealand	1120	90700	Not S



Redesigned Data Sources page

New Data Sources page

The data sources page was redesigned to be more user friendly. The Display pane contains categories that you can click to see data sources by type, the connections that you built, and the data flows that you built. The Create pane contains links that you can click to quickly begin creating data sources, connections, and data flows.






New Authentication option for Oracle Applications connections

Personalized Connections

You can specify if you want users to enter their own credentials to access the Oracle applications data that they have the permissions to see.

Add a New Connection



Oracle Applications

*New Connection Name

(e.g) My Connection

*URL

(e.g) http://www.example.com:9704/analytics

*Username

*Password

*Authentication

☒ Always use this username and password

☐ Require users to enter their own username and password

<

Save

Cancel



Create New Data Source Page

New Query Builder

The Create New Data Source page is easier to use and includes functionality such as the option to add filters when building database data sources.

Create Source from My Oracle DB Database

My Oracle DB > SH > SALES

Name: SALES

Select Columns (selected) Enter SQL

Search Add All Add Selected

Selections (7/7) Remove All Remove Selected

AMOUNT_SOLD
CHANNEL_ID
CUST_ID
PROD_ID
PROMO_ID
QUANTITY_SOLD
TIME_ID

SH
SALES
AMOUNT_SOLD
CHANNEL_ID
CUST_ID
PROD_ID
PROMO_ID

Refresh Data

AMOUNT_SOLD	CHANNEL_ID	CUST_ID	PROD_ID	PROMO_ID	QUANTITY_SOLD	TIME_ID
1,205.99	2.00	524.00	13.00	999.00	1.00	01/20/1998 1
1,232.16	3.00	188.00	13.00	999.00	1.00	01/20/1998 1
1,232.16	3.00	361.00	13.00	999.00	1.00	01/20/1998 1
1,232.16	3.00	1,660.00	13.00	999.00	1.00	01/10/1998 1
1,232.16	3.00	1,762.00	13.00	999.00	1.00	01/10/1998 1
1,232.16	3.00	1,843.00	13.00	999.00	1.00	01/10/1998 1

< OK Cancel



New Data Sources

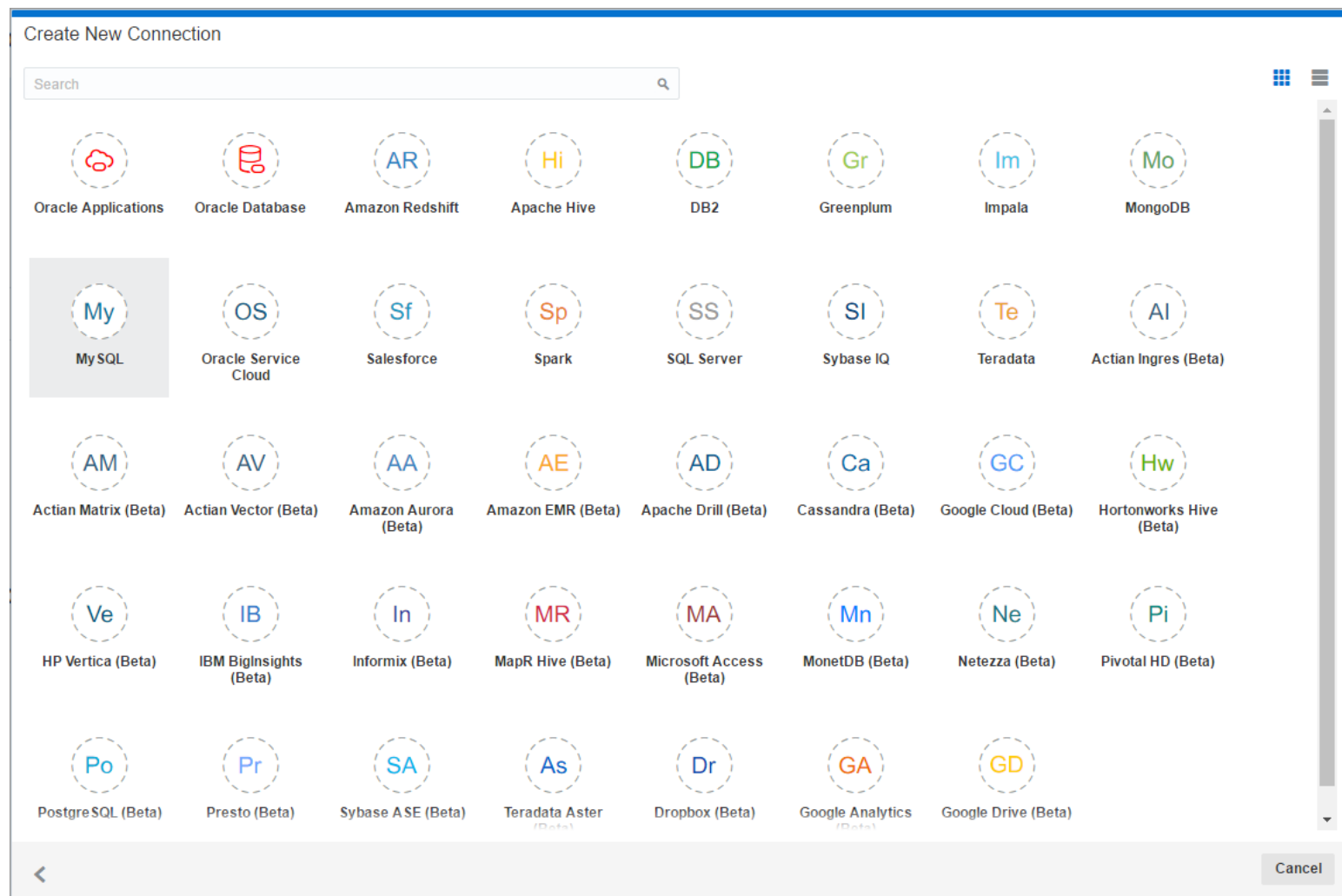
The following databases have been promoted from Beta to Full Support:

- Greenplum
- RightNow (renamed Oracle Service Cloud)

.CSV files as data sources.

Databases added with Beta support:

- Actian Ingres, Actian Matrix, Actian Vector, Amazon Aurora, Amazon EMR, Apache Drill, Cassandra, Dropbox, Google Analytics, Google Cloud, Google Drive, Hortonworks Hive, HP Vertica, IBM BigInsights, Informix, MapR Hive, Microsoft Access, MonetDB, Netezza, Pivotal HD, Postgre SQL, Presto, Sybase ASE, and Teradata Aster.





Improve All Data with Powerful Data

Data Flows

- You can use data flows to produce curated data sources that you can use to create visualizations.

The screenshot displays a data flow workflow at the top and a data preview table below it. The workflow starts with three input sources: 'Sample Order...', 'Sample State...', and 'CUSTOMERS'. 'Sample Order...' and 'Sample State...' are joined together, then their output is joined with 'CUSTOMERS'. This combined stream passes through a 'Select Column...' step, followed by an 'Aggregate' step, and finally a 'Join' step before reaching the 'Save Data' output.

The 'Preview' tab of the 'Aggregate' step shows the following data:

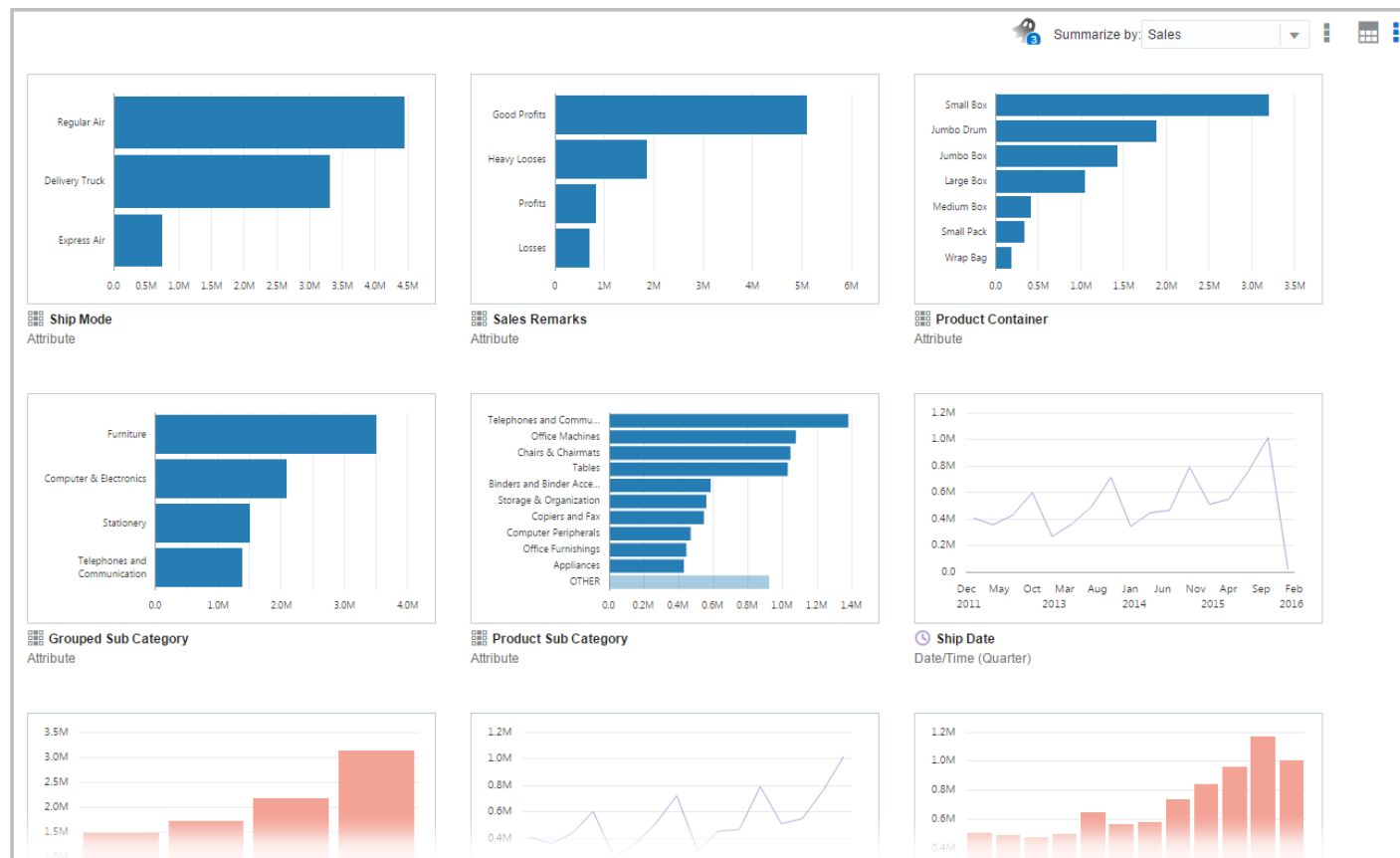
CUST_FIRST_NAME	CUST_CITY	CUST_CITY_ID	City	State	Postal_Code	Country	Latitude	Longitude	Continent	Region	Order Line ID	Order ID	O
Emmet	Adelaide	51,045.00	Adelaide	South Australia	AU101679	Australia	-34.93	138.60	Oceania	Australia and New Zealand	1001	88934	Not S
Emmet	Adelaide	51,045.00	Adelaide	South Australia	AU101679	Australia	-34.93	138.60	Oceania	Australia and New Zealand	1002	88934	Not S
Emmet	Adelaide	51,045.00	Adelaide	South Australia	AU101679	Australia	-34.93	138.60	Oceania	Australia and New Zealand	1005	88931	High
Emmet	Adelaide	51,045.00	Adelaide	South Australia	AU101679	Australia	-34.93	138.60	Oceania	Australia and New Zealand	1006	90342	Medi
Emmet	Adelaide	51,045.00	Adelaide	South Australia	AU101679	Australia	-34.93	138.60	Oceania	Australia and New Zealand	1008	90342	Medi
Emmet	Adelaide	51,045.00	Adelaide	South Australia	AU101679	Australia	-34.93	138.60	Oceania	Australia and New Zealand	1034	86395	Not S
Emmet	Adelaide	51,045.00	Adelaide	South Australia	AU101679	Australia	-34.93	138.60	Oceania	Australia and New Zealand	1037	86383	Medi
Emmet	Adelaide	51,045.00	Adelaide	South Australia	AU101679	Australia	-34.93	138.60	Oceania	Australia and New Zealand	1047	86392	High
Emmet	Adelaide	51,045.00	Adelaide	South Australia	AU101679	Australia	-34.93	138.60	Oceania	Australia and New Zealand	1058	89325	Low
Emmet	Adelaide	51,045.00	Adelaide	South Australia	AU101679	Australia	-34.93	138.60	Oceania	Australia and New Zealand	1059	89326	Medi
Emmet	Adelaide	51,045.00	Adelaide	South Australia	AU101679	Australia	-34.93	138.60	Oceania	Australia and New Zealand	1060	89321	Not S
Emmet	Adelaide	51,045.00	Adelaide	South Australia	AU101679	Australia	-34.93	138.60	Oceania	Australia and New Zealand	1069	87810	Low
Emmet	Adelaide	51,045.00	Adelaide	South Australia	AU101679	Australia	-34.93	138.60	Oceania	Australia and New Zealand	1085	87906	Medi
Emmet	Adelaide	51,045.00	Adelaide	South Australia	AU101679	Australia	-34.93	138.60	Oceania	Australia and New Zealand	1090	87707	Low
Emmet	Adelaide	51,045.00	Adelaide	South Australia	AU101679	Australia	-34.93	138.60	Oceania	Australia and New Zealand	1103	88481	Not S
Emmet	Adelaide	51,045.00	Adelaide	South Australia	AU101679	Australia	-34.93	138.60	Oceania	Australia and New Zealand	1104	88481	Not S
Emmet	Adelaide	51,045.00	Adelaide	South Australia	AU101679	Australia	-34.93	138.60	Oceania	Australia and New Zealand	1115	90698	High
Emmet	Adelaide	51,045.00	Adelaide	South Australia	AU101679	Australia	-34.93	138.60	Oceania	Australia and New Zealand	1120	90700	Not S



Find Hidden Patterns with Smart Insights

Automatic detection of data patterns

- The smart insights feature helps you better understand the data in your data source and how to best visualize it in a project.

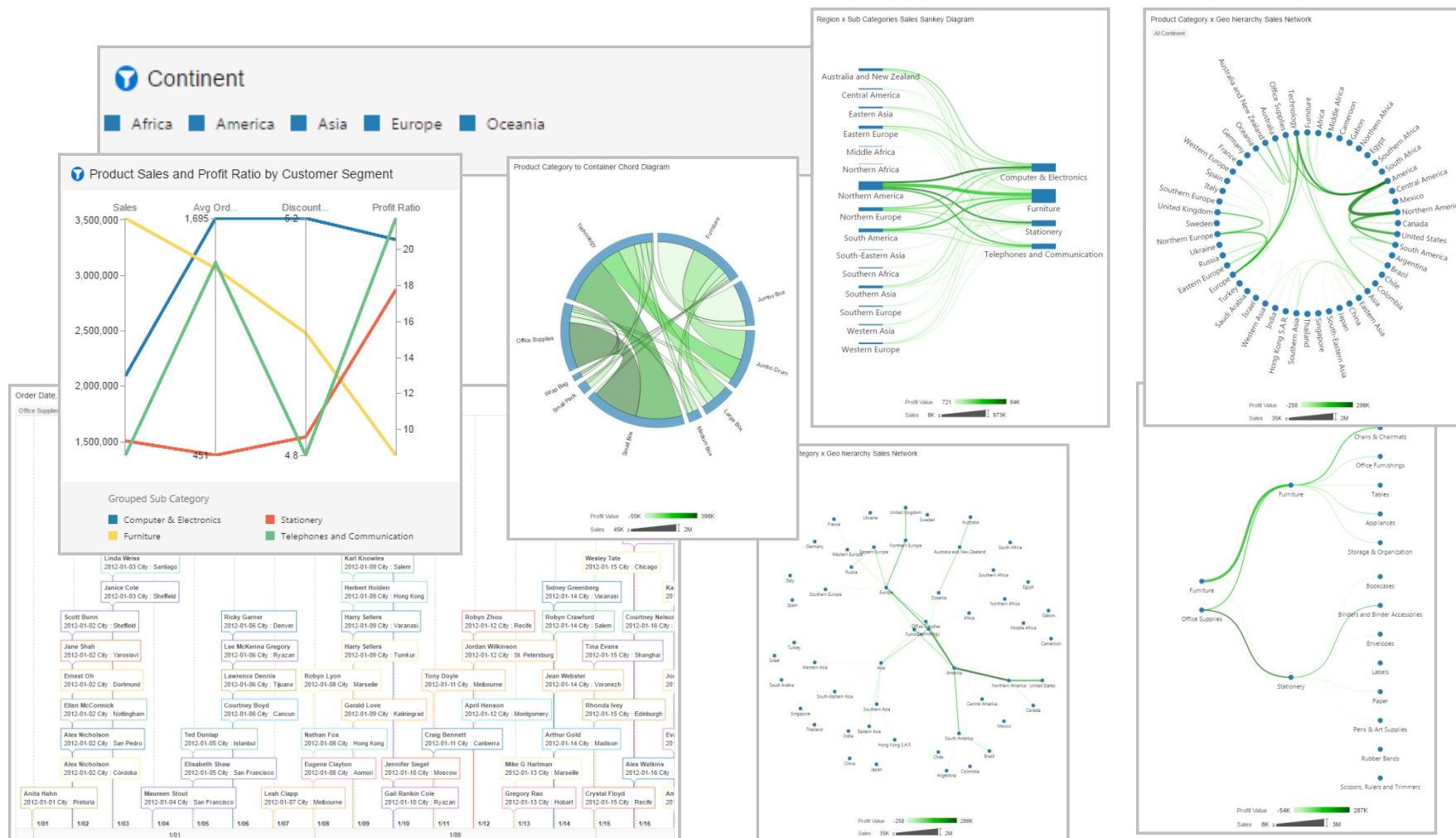




New Visualizations

8 New Visualizations

- List
- Parallel Coordinates
- Timeline
- Chord Diagram
- Circular Network
- Network
- Sankey
- Tree Diagram

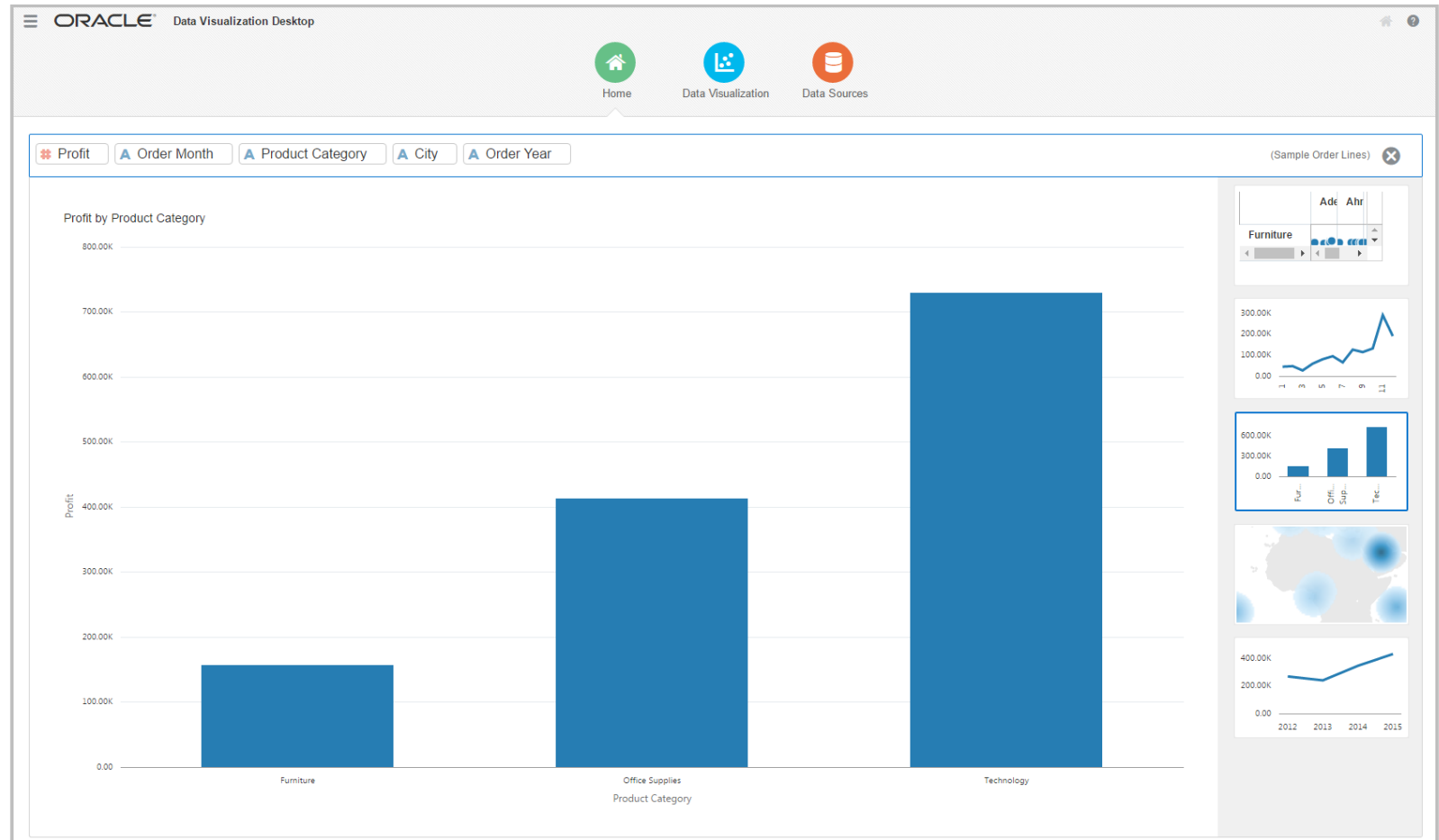




Talk to Your Data with BI Ask

Powerful, intuitive keyword search

- Interprets semantic layer, user private data, expression library and catalog artifacts
- Fuzzy match, stemming, natural language processing
- Generates on-the-fly queries - visualizations are auto-created while user types





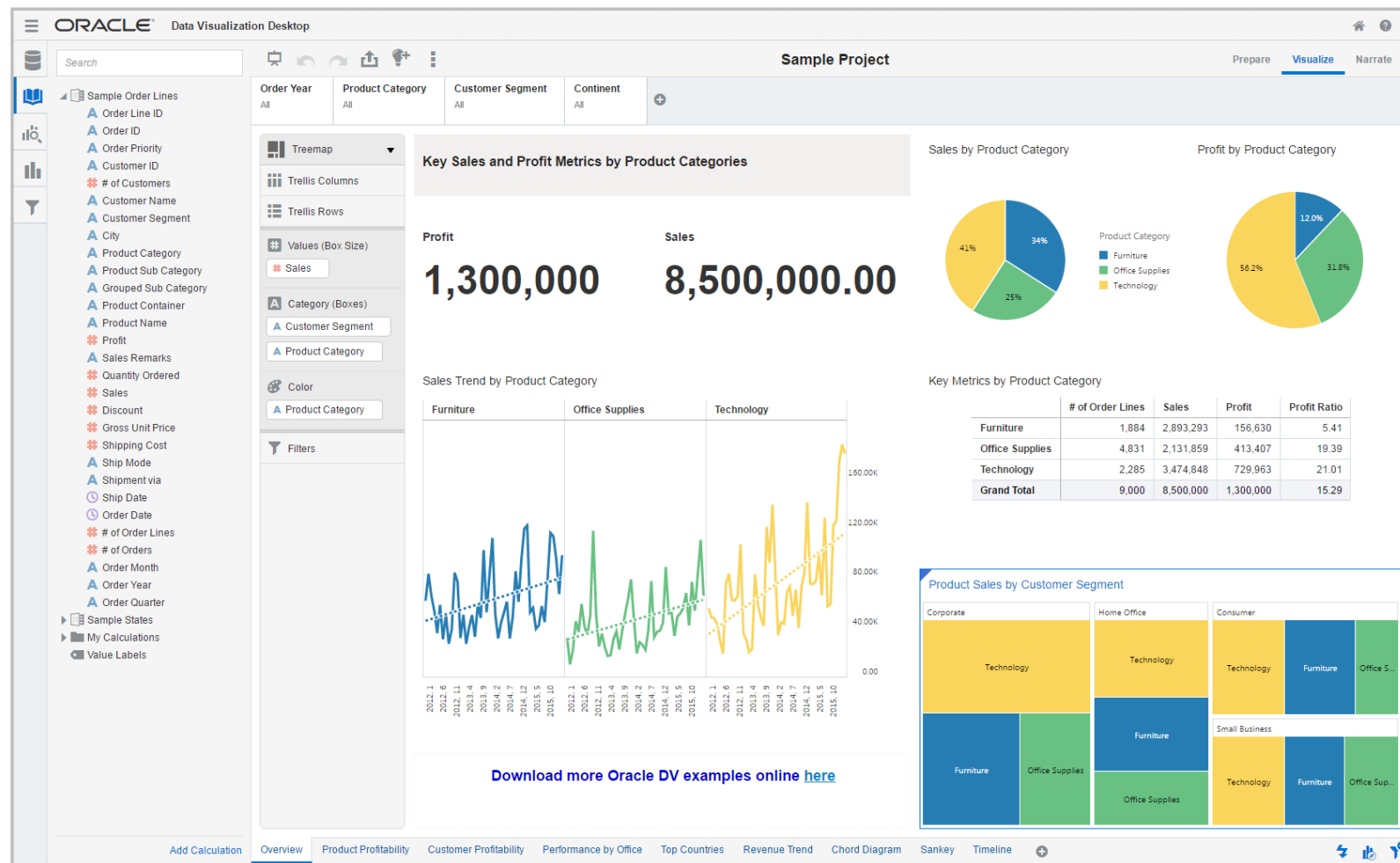
Multi-Canvas Projects

Multiple Canvases

- A project can have multiple canvases.

Easier switching between Prepare, Visualize and Narrate

- New menu options for switching between canvas and insights





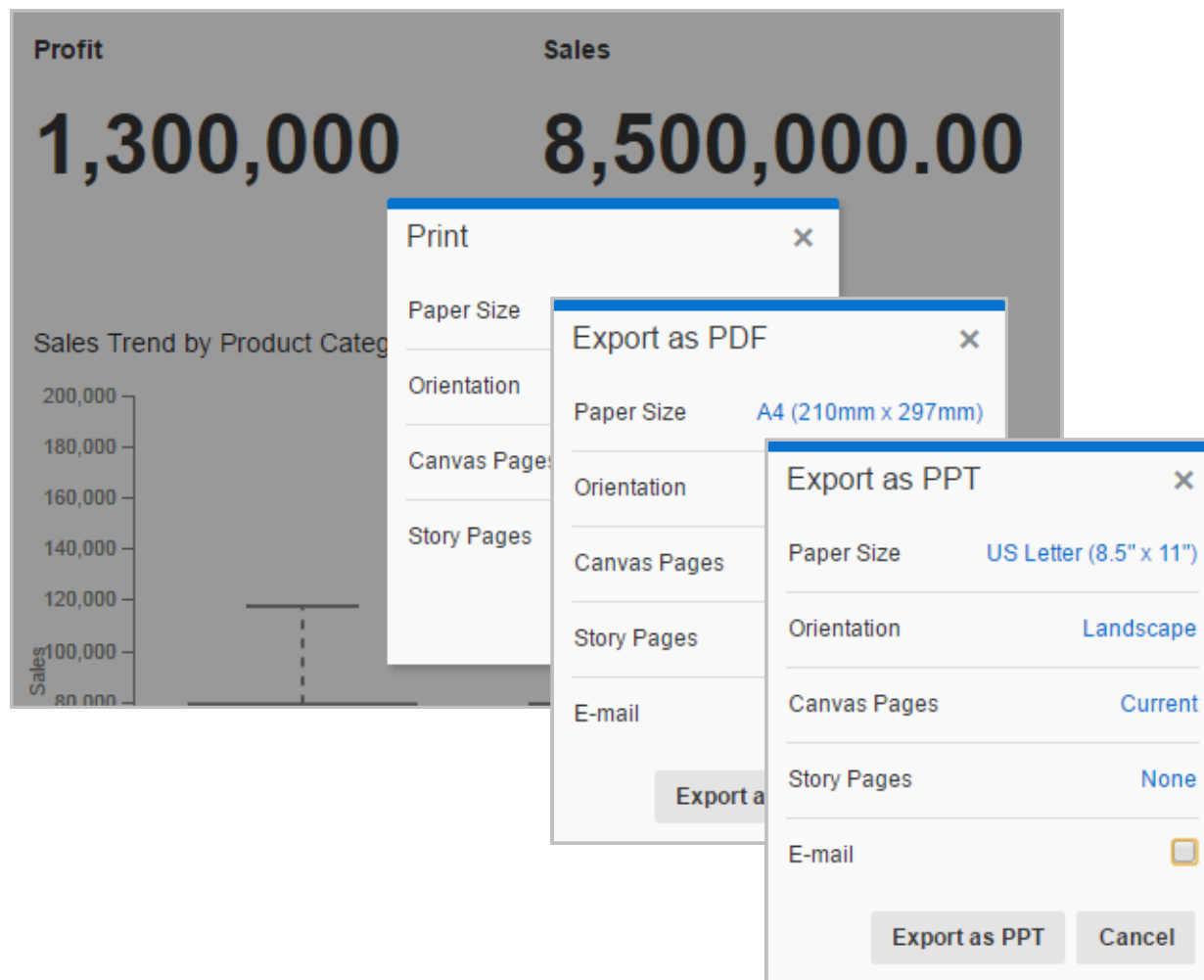
New Output and Sharing Options

Print options

- Print all canvases and insight pages or selected pages from a project
- Print an individual visualization

Export options

- Export all canvases and insights or selected pages to PDF or PowerPoint
- Attach the output to an email



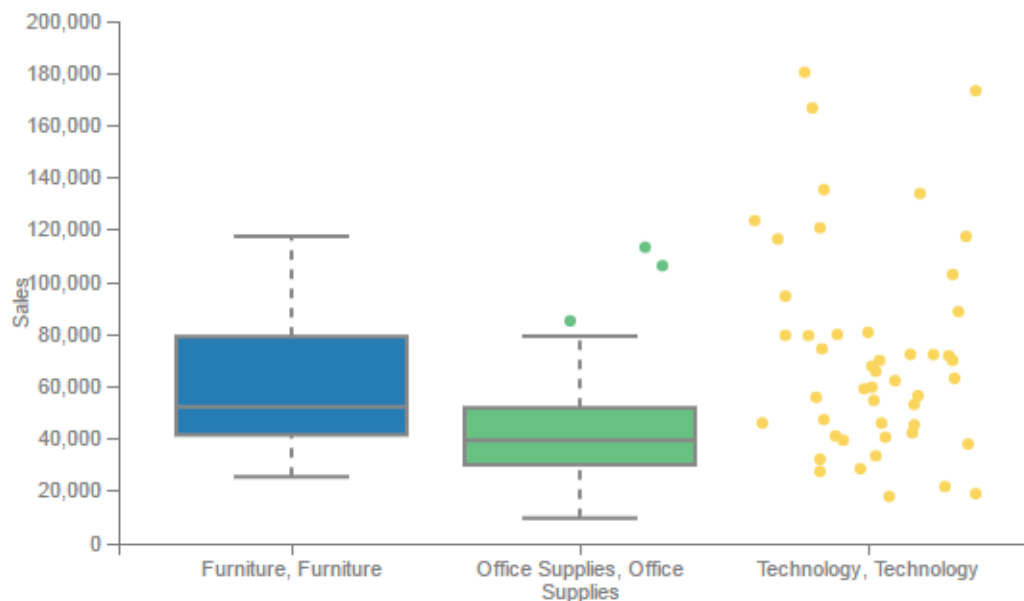


SDK for Developers

Visualization SDK

- Develop custom visualizations
- 100% functional, LCM parity with native visualizations

Sales Trend by Product Category

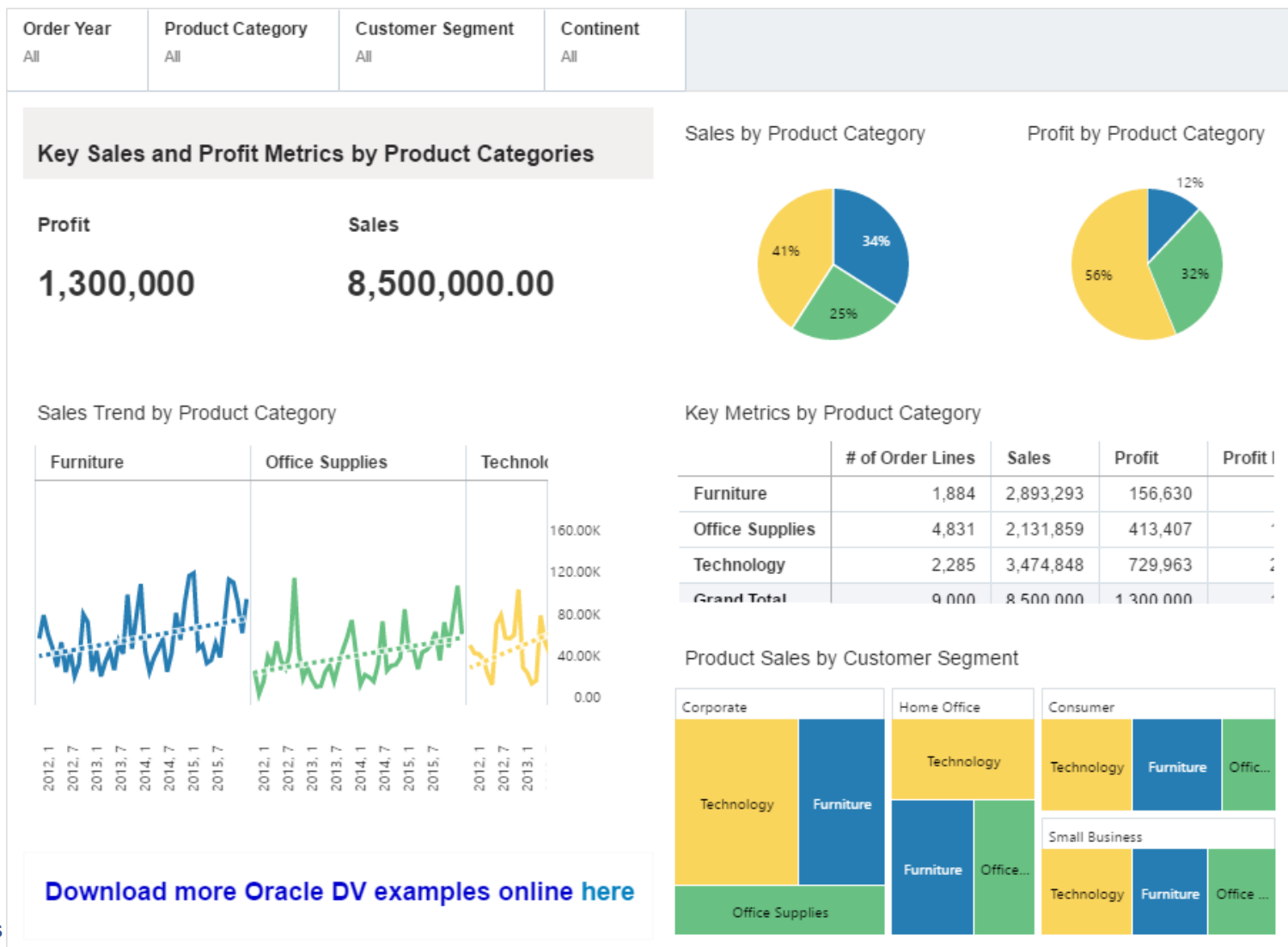




Following are Exported from DVD

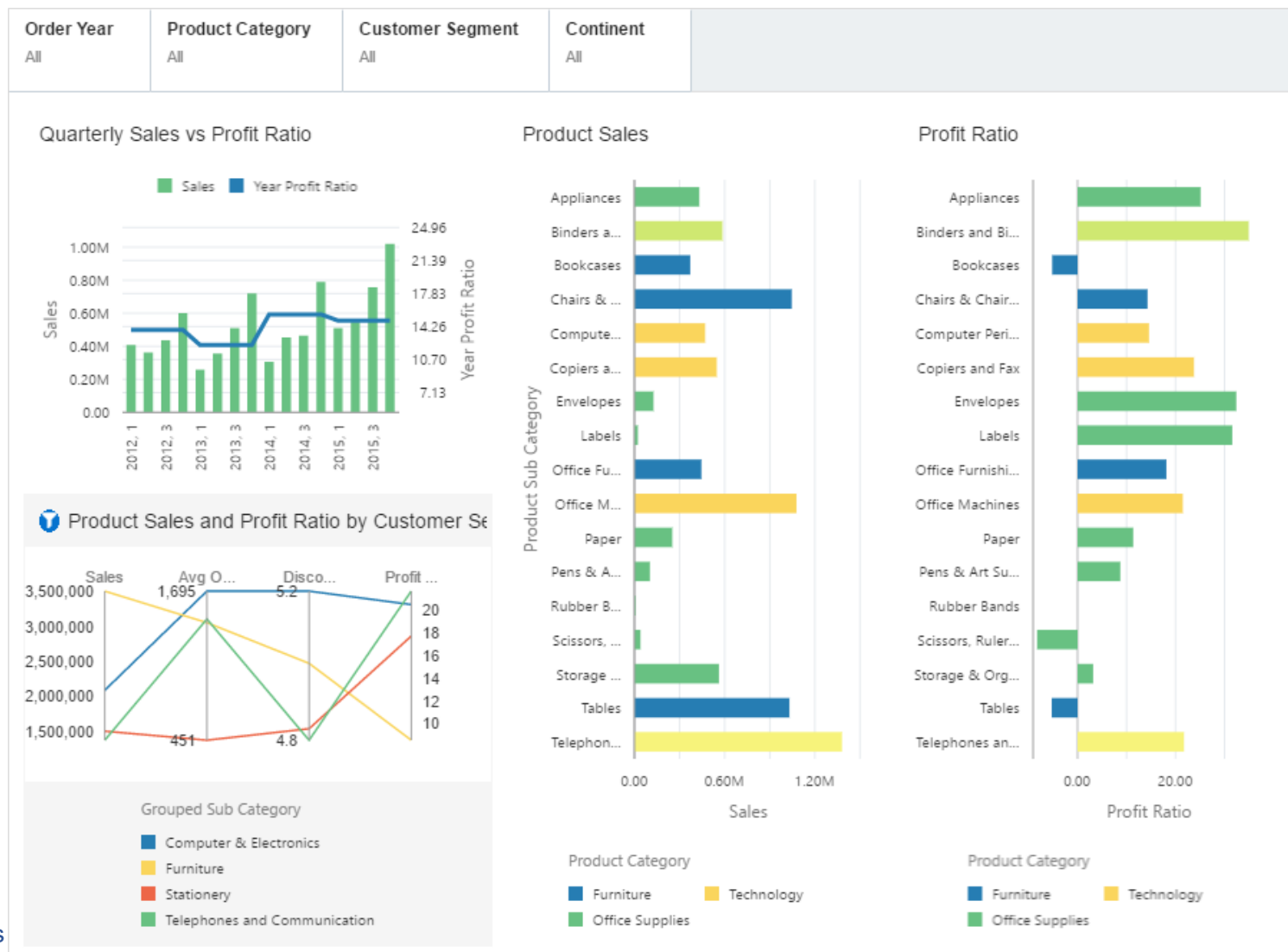


Sample Project - Overview



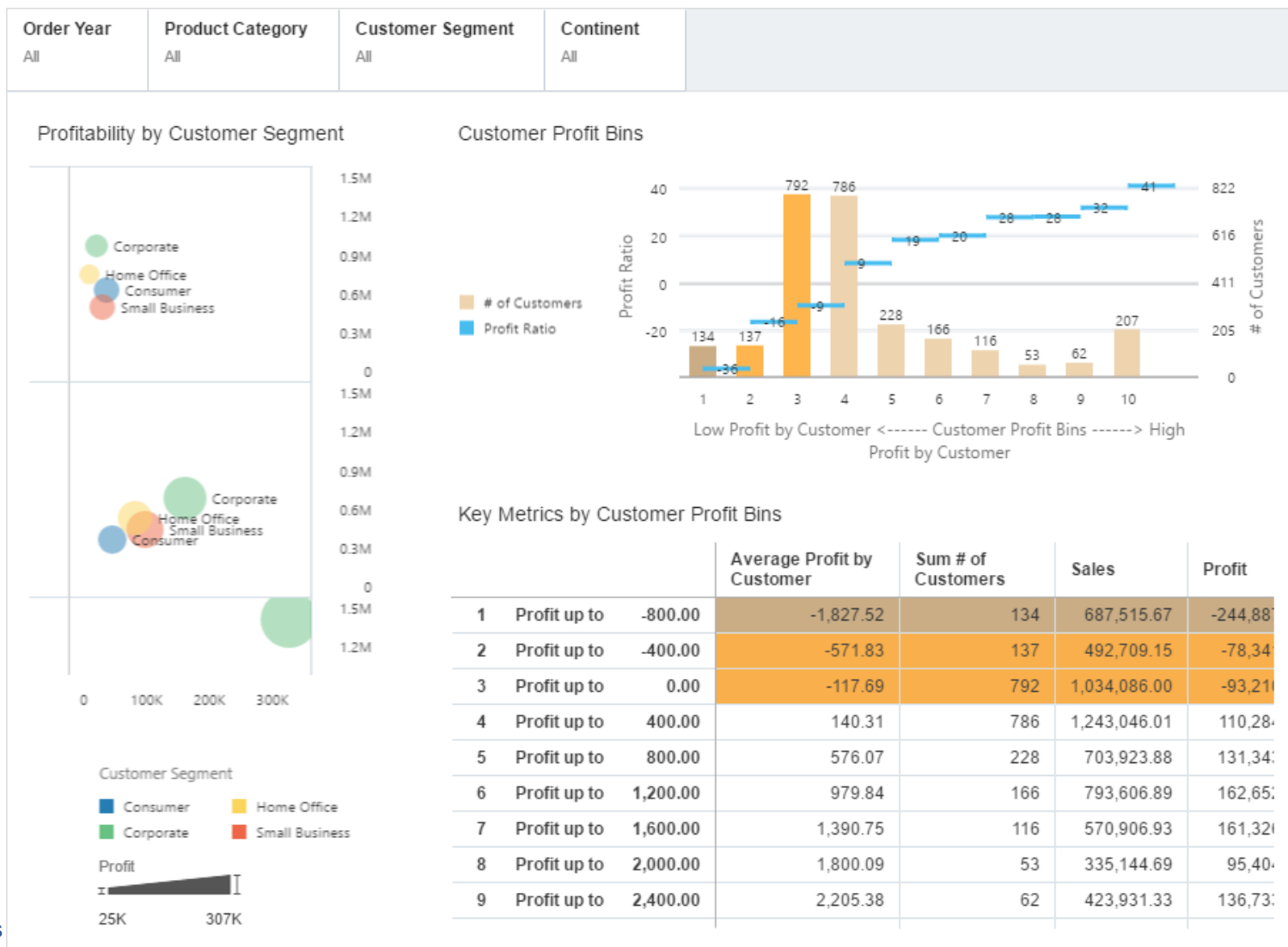


Sample Project - Product Profitability



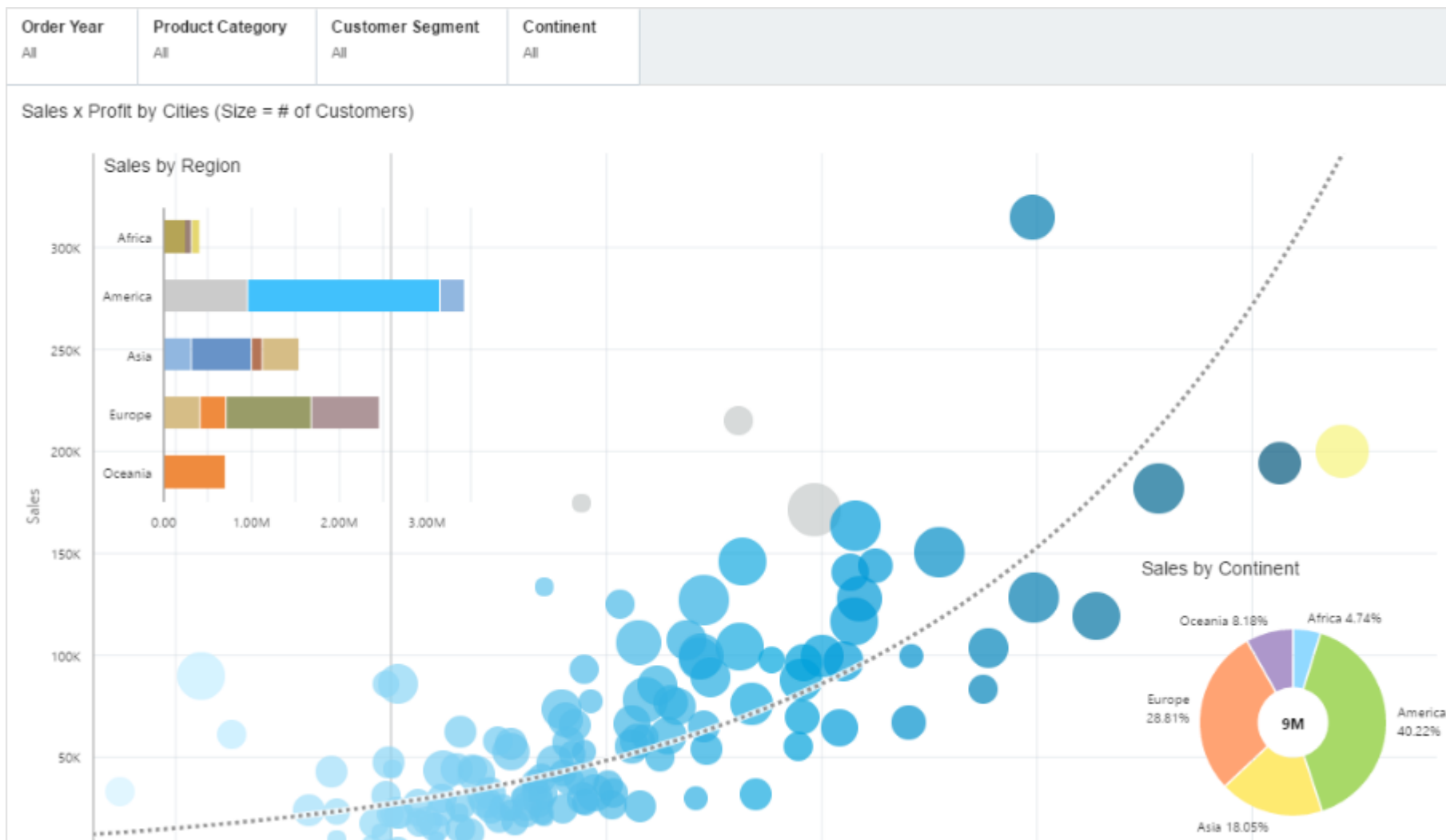


Sample Project - Customer Profitability



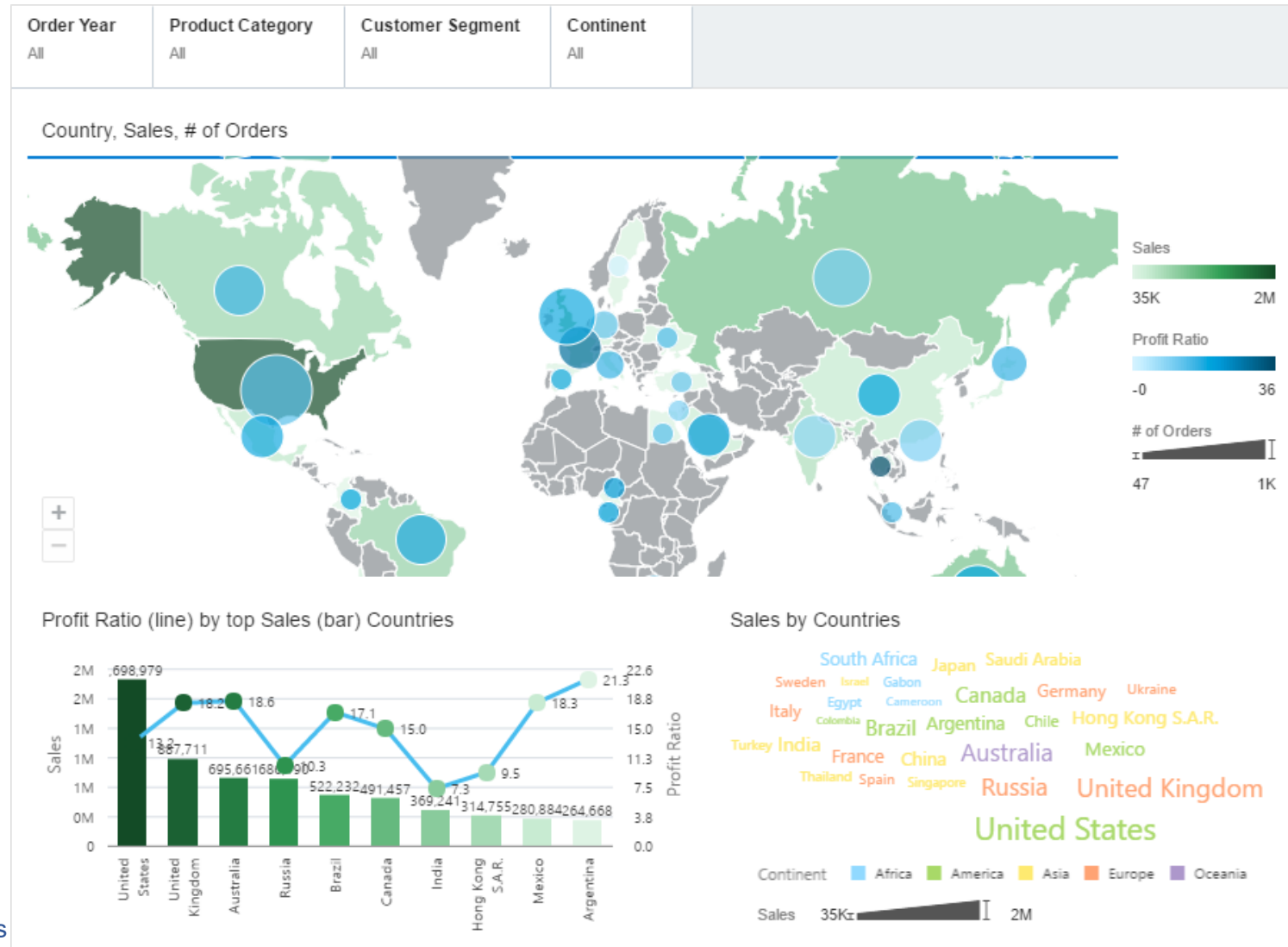


Sample Project - Performance by Office



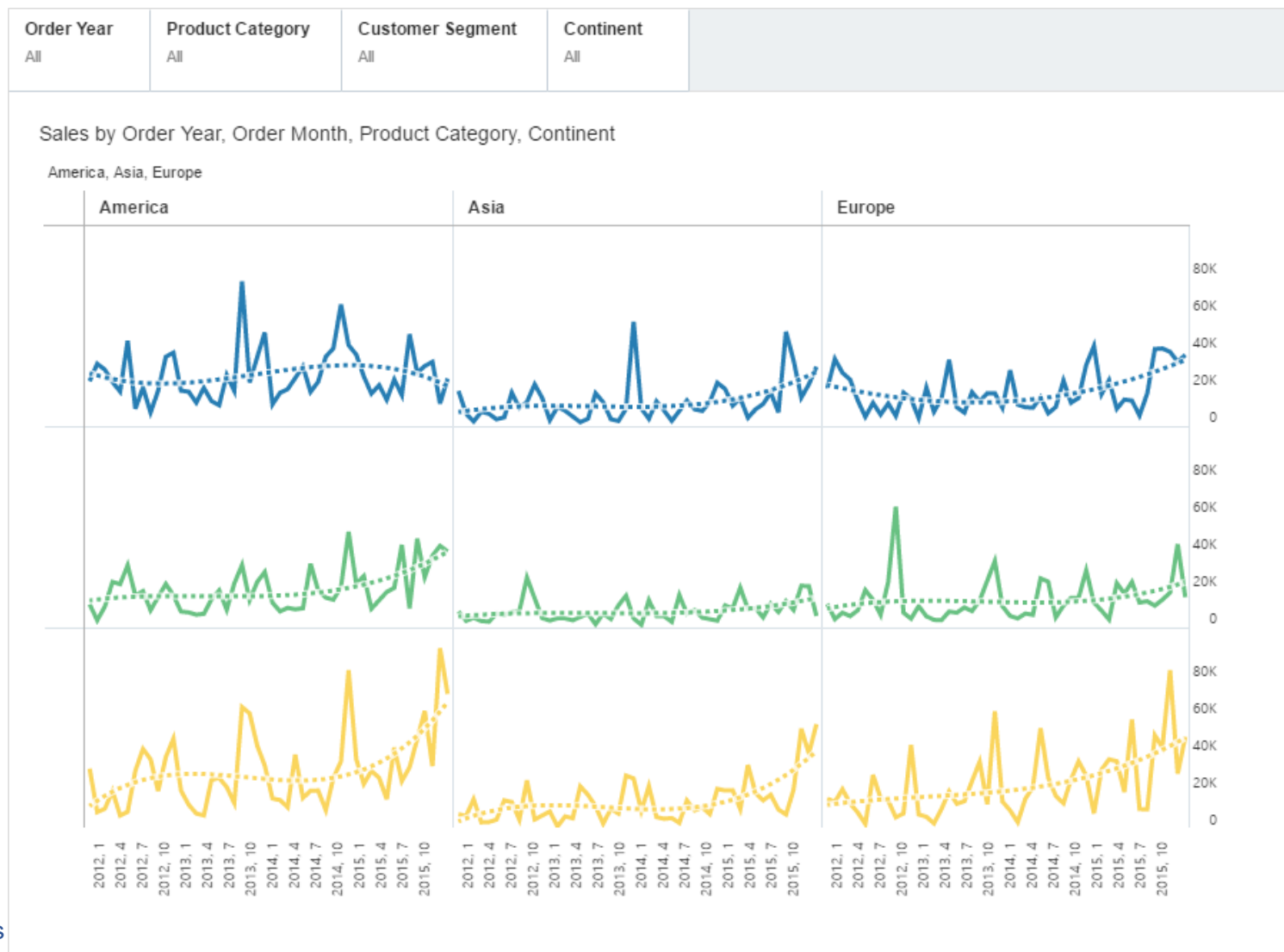


Sample Project - Top Countries



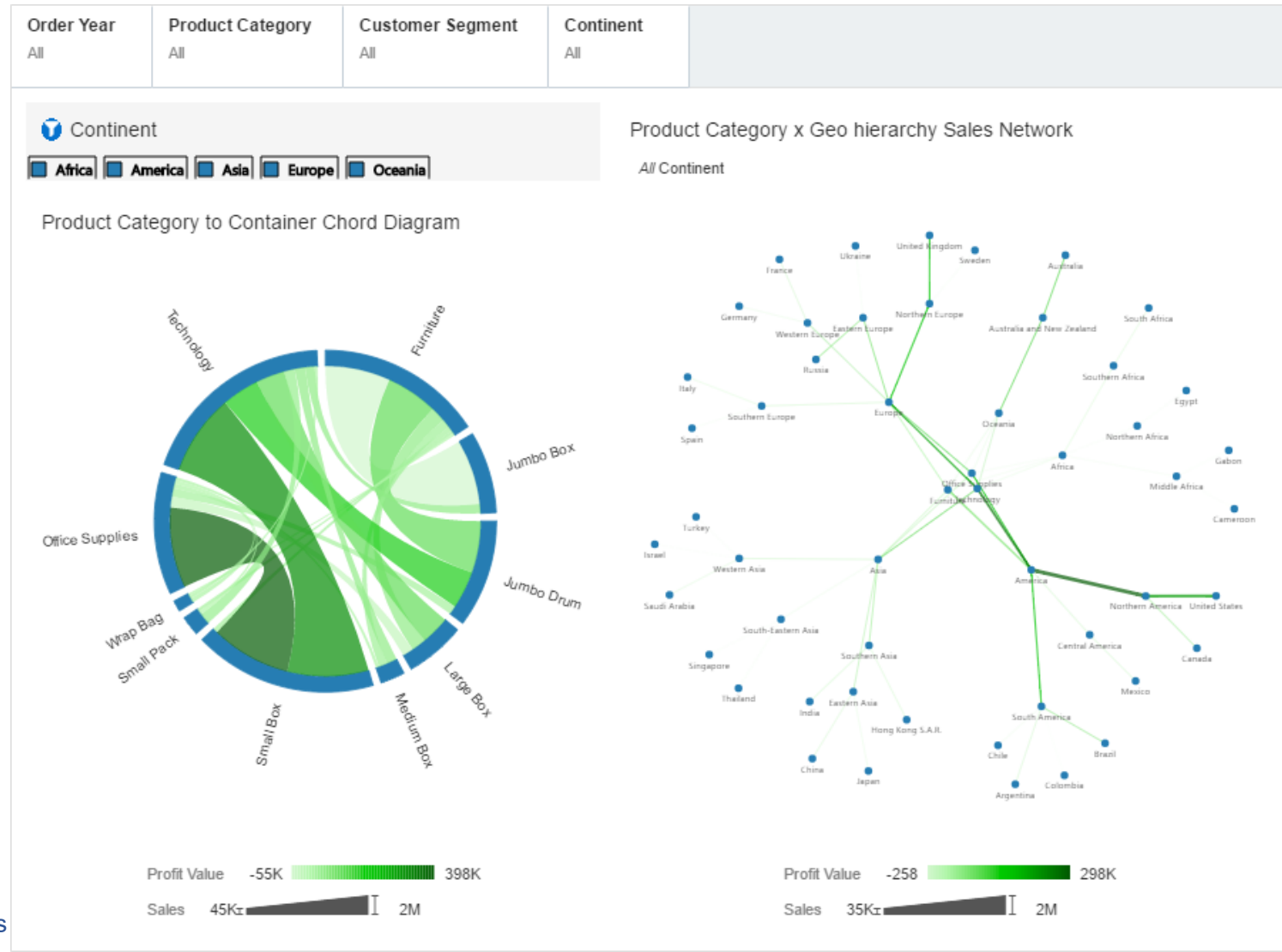


Sample Project - Revenue Trend



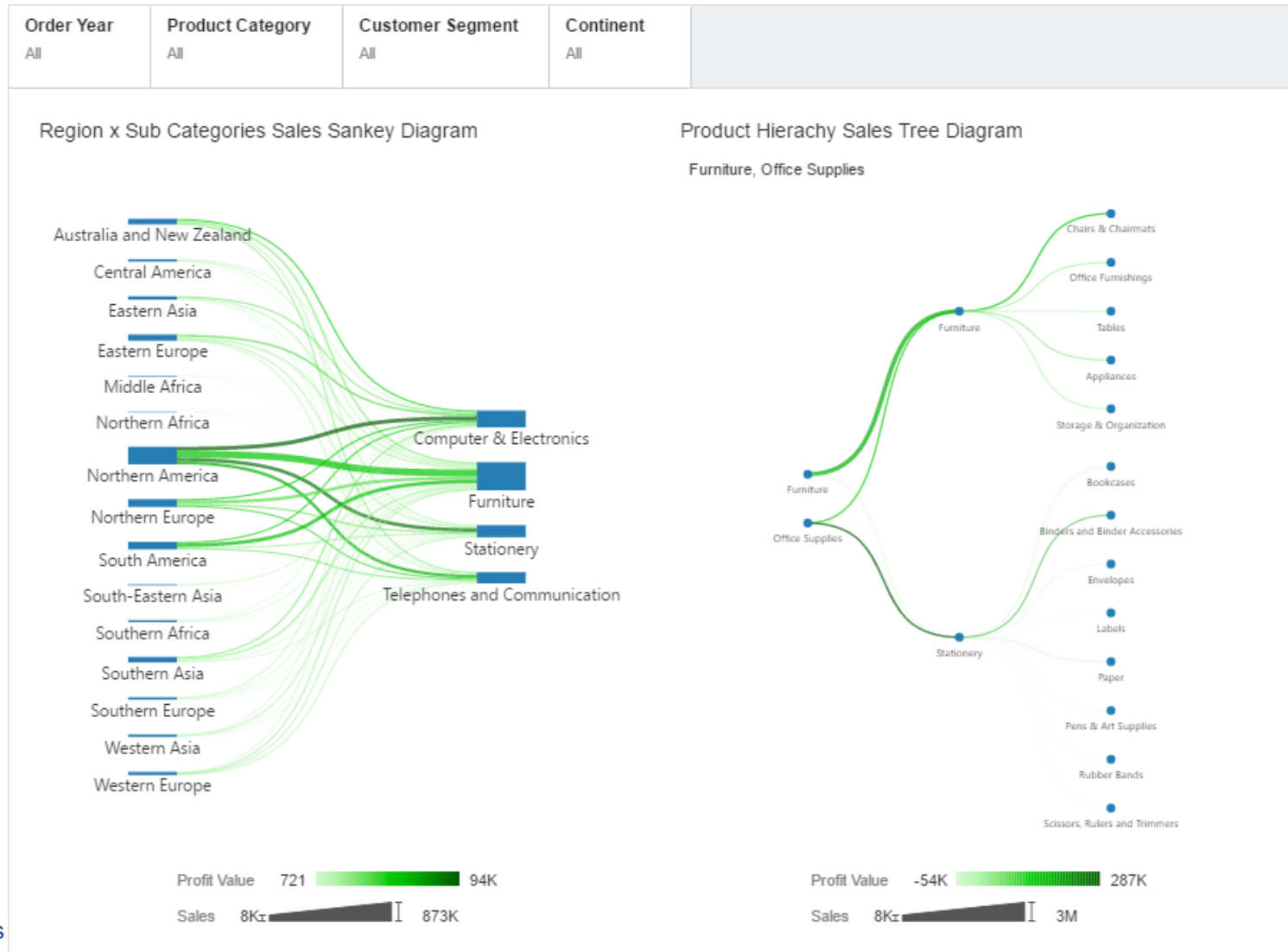


Sample Project - Chord Diagram





Sample Project - Sankey





Sample Project - Timeline

