



**SOFTWARE SOLUTIONS**

# **Delivering Cloud-based Business Intelligence with Oracle BI**

**Dan Vlamis**  
**Vlamis Software Solutions**  
**816-781-2880**  
**<http://www.vlamis.com>**



# Cloud Based BI Agenda

- Amazon Web Services (AWS) and VlamiS
  - How we use the AWS environment
  - VlamiS involvement in Test Drive
- Benefits of Test Drives
- VlamiS Test Drives
  - Signup Process Overview
  - OBIEE Test Drive
  - BI Publisher Test Drive
- Live Demonstration
- Questions and Answers



# VlamiS Software Solutions

- VlamiS Software founded in 1992 in Kansas City, Missouri
- Developed more than 200 Oracle BI systems
- Specializes in ORACLE-based:
  - Data Warehousing
  - Business Intelligence
  - Design and integrated BI and DW solutions
  - Training and mentoring
- Expert presenter at major Oracle conferences
- [www.vlamiS.com](http://www.vlamiS.com) (blog, papers, newsletters, services)
- Beta tester for OBIEE 11g
- HOL Coordinator for 2012 Collaborate Conference



# Vlami and AWS

- How we use Amazon Web Services
  - Training Environments
  - Development and Testing
  - Large File Storage for Customer Downloads
- How we got involved in Test Drive
  - Collaborate 2012
  - Vlami Hosted Hands On Lab using AWS
  - Recognized need for 24/7 HOL Environment





# Benefits of Test Drives

- Completely free to the end user
- Fully configured training environment
- Backed by the power of the AWS EC2 environment
- Try it before you buy the Oracle software
- Repeatable
- Available 24/7, provisioned on demand in minutes



# VlamiS Test Drives

- <http://www.awstestdrive.com>

## Oracle Fusion Middleware

### Oracle Business Intelligence

This test drive will present a quick overview of OBIEE 11g and allow users to create reports and dashboards for themselves. The lab uses version 11.1.1.6 of Oracle BI and showcases the following features: adhoc reports, graphs, maps, and color-coding.

Try it now 

Powered by:  
 **vlamis**™  
SOFTWARE SOLUTIONS

### Oracle BI Publisher

This test drive covers using Oracle BI Publisher 11g to create simple reports based on Oracle Database. Also, it shows you how to create report layouts using the Layout Editor online, and how to schedule reports.

Try it now 

Powered by:  
 **vlamis**™  
SOFTWARE SOLUTIONS

### Excel Analysis of OLAP Data


This test drive allows you to see how easy it is to view and analyze data using Microsoft Excel from data from the Oracle database. Data is stored in cube objects in the Oracle database using the Oracle OLAP option. This data is accessed in Excel via the MDX Provider for Oracle OLAP from Simba Technologies.

Try it now 

Powered by:  
 **vlamis**™  
SOFTWARE SOLUTIONS

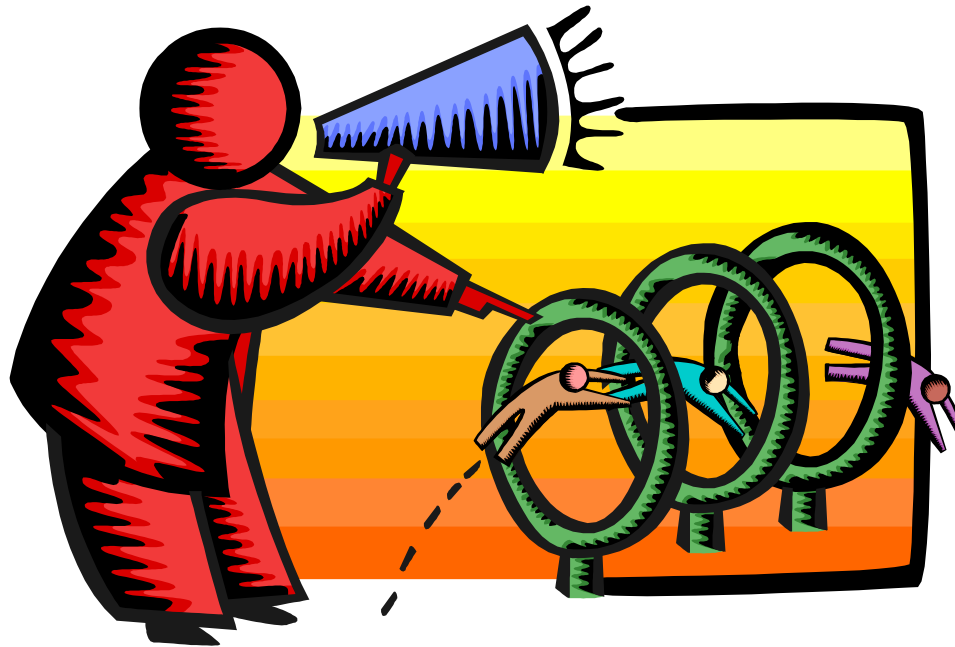


# Signup Process Overview

- Visit AWS Oracle website or VlamiS.com
- Click on the Try it Now icon 
- Sign up
- Receive email with login information
- Directed to website with dedicated server connection information and hands on lab instructions
- Connect to Server with Remote Desktop
- Perform Test Drive



# Test Drive Environment Demonstration

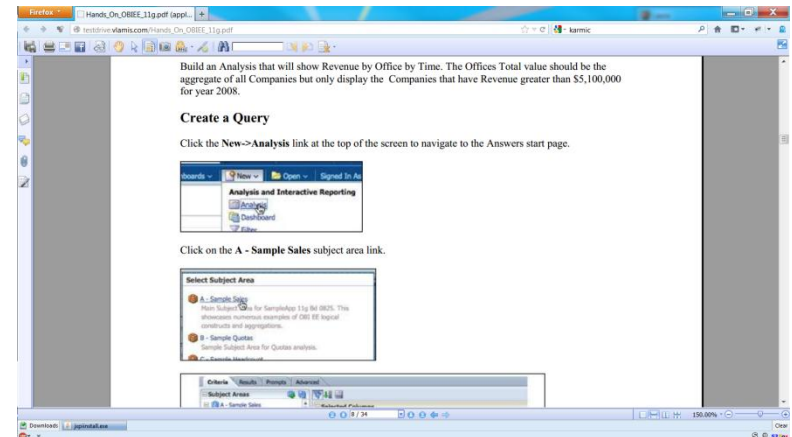
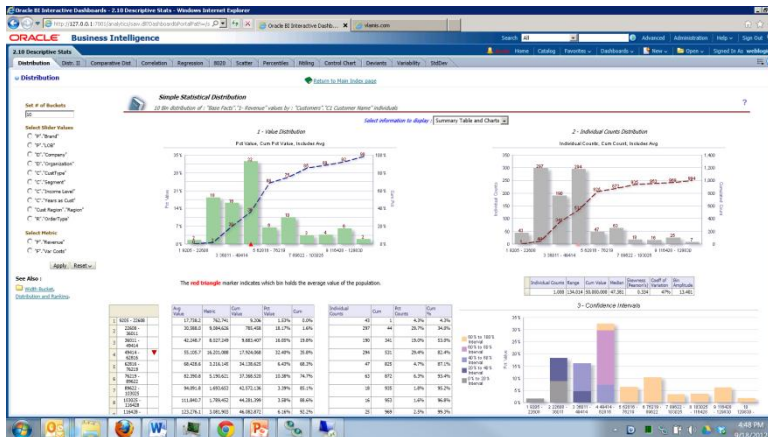






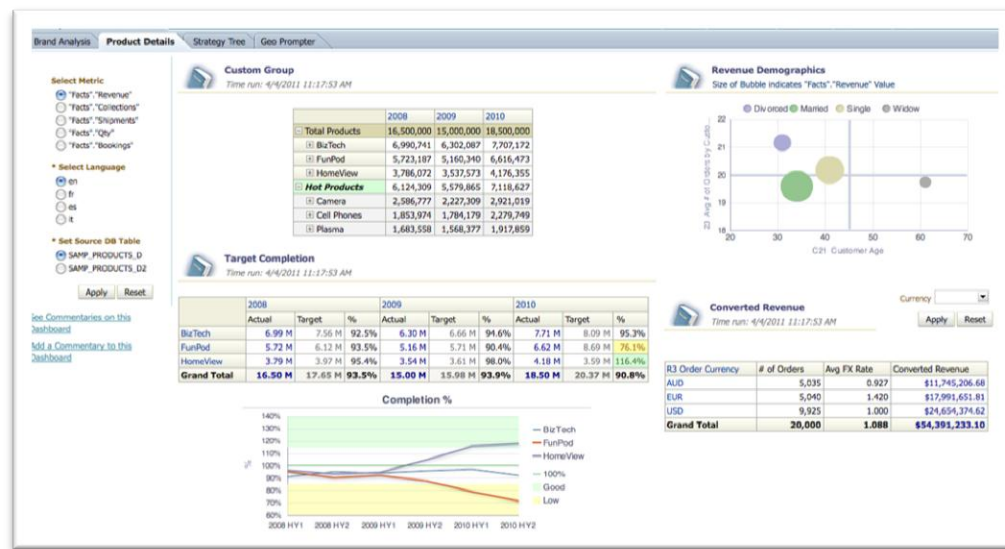
# Tips

- Allow for 15 minutes for start up
- Leave browser window with machine name open
- Use two monitors or print out Test Drive instructions
- Follow all the steps in each of the Test Drive labs as they build on each other.



# OBIEE Test Drive

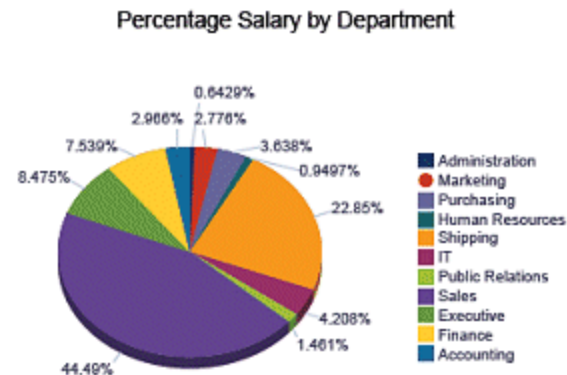
- Quick overview of OBIEE 11g
- Create Reports
- Create Dashboards
- The lab uses version 11.1.1.6.2 BP1 with SampleApp v207 of Oracle BI and showcases the following features:
  - Adhoc reports,
  - Graphs
  - Maps
  - Color-coding





# BI Publisher Test Drive

- This test drive covers using Oracle BI Publisher 11g to create simple reports from the Oracle Database.
- Create data connections to multiple sources
- Create data models
- Create report layouts using the Layout Editor online
- Schedule reports



# Excel Analysis of OLAP Data Test Drive

- This test drive allows you to see how easy it is to view and analyze data using Microsoft Excel from data from the Oracle database.

ec2-54-242-125-103.compute-1.amazonaws.com - Remote Desktop Connection

Microsoft Excel

PivotTable Tools: Options, Design

File Home Insert Page Layout Formulas Data Review View

Clipboard Font Alignment Number Styles Cells Editing

OracleOLAP

PivotTable Field List

Choose fields to add to report:

Σ Values

☐ Cross Over Best Fit Fcst

☐ Cross Over Linear Regression

☐ How Is Sales Ytd

☐ Pct Of 2008

☐ Product Alert

Drag fields between areas below:

Report Filter: Sales Channel

Column Labels: Calendar

Row Labels: Standard

Σ Values: Sales

☐ Defer Layout Update

Update

	A	B	C	D	E
1	Sales Channel	All Channels			
2					
3	Sales	Column Labels			
4	Row Labels	CY2007	CY2008	CY2009	Grand Total
5	Computers	\$96,378,266.08	\$112,123,808.09	\$127,906,615.22	\$336,408,689.39
6	Cameras and Camcorders	\$8,854,901.64	\$10,572,098.22	\$12,393,248.54	\$31,820,248.40
7	Cameras and Accessories	\$4,786,410.84	\$6,056,792.62	\$7,058,155.94	\$17,901,359.40
8	Cameras	\$1,218,495.10	\$1,737,862.74	\$2,149,738.81	\$5,106,096.65
9	Camera Accessories	\$3,567,915.74	\$4,318,929.88	\$4,908,417.13	\$12,795,262.75
10	Camcorders and Accessories	\$4,068,490.80	\$4,515,305.60	\$5,335,092.60	\$13,918,889.00
11	Camcorder Accessories	\$3,696,516.40	\$4,023,098.00	\$4,655,537.60	\$12,375,152.00
12	Camcorders	\$371,974.40	\$492,207.60	\$679,555.00	\$1,543,737.00
13	Portable Music and Video	\$15,102,590.70	\$16,264,253.09	\$17,919,235.69	\$49,286,079.48
14	Grand Total	\$120,335,758.42	\$138,960,159.40	\$158,219,099.45	\$417,515,017.27



# When to Use Oracle Test Drive

- When client on fence and wants to try software
- Client needs trial access to Oracle software before purchase
- Instead of Proof of Concept
- Use for customized demo
- Instead of downloading software, eliminating installation headache



# Why Vlami

- Founded 1992
- Focused on Oracle technology since 1995
- Experienced consultants with over 200 BI implementations
- Award winning authors and educators
- Aggressive adopters of the latest technologies
- Connected with Oracle product management and developers
- Efficient implementers by working offsite to reduce costs
- Team-oriented collaborative approach
- Respected reputation for ethical business practices



# Training

- Training available for on-site, web, and CBT
  - OBIEE 10g to OBIEE 11g Upgrading and New Features
  - OBIEE 11g/10g - Ad-hoc Query and BI Answers
  - OBIEE 11g/10g - BI Dashboards and Delivers
  - OBIEE 11g/10g - Administration and Metadata Development
  - BI Publisher for OBIEE 11g/10g
  - Oracle OLAP



# Oracle Technologies

- Oracle BI applications
- Oracle Database
- Oracle OLAP
- Oracle Data Mining
- Oracle Spatial
- Oracle Warehouse Builder
- Oracle Application Express
- Oracle Discoverer
- Oracle BI EE
- NAVTEQ Map data
- Oracle JDeveloper
- Oracle BI Beans
- SQL Developer
- Oracle Express
- Essbase
- OSA and OFA
- Oracle BI SE
- BI Publisher





# Awards and Qualifications

- Published seven times from 2002 to 2009 in Oracle Magazine
- Authors of Oracle Press's "Oracle Essbase & Oracle OLAP: The Guide to Oracle's Multidimensional Solution"
- Present regularly at Oracle OpenWorld, and other Oracle user group conferences
- Board of Directors for BIWA SIG of IOUG
- Track manager for Collaborate 2010 & 2011
- BIWA Summit 2013 conf committee [www.biwasummit.org](http://www.biwasummit.org)
- On Oracle Magazine Editorial Board
- Oracle ACE designation
- Developed 1<sup>st</sup> Oracle BI Beans-based Oracle OLAP application



# Specifics on Vlami

- Most active in OBIEE 11g Beta program. Installed many times.
- Experts in OBIEE map views and integrating spatial data
- Reseller of NAVTEQ data with active relationship
- Experts in Oracle OLAP
- Strong relationship with BI and OLAP product management
- Ask any BI product manager about Vlami
- Experts in data visualization – see prior presentations at Oracle OpenWorld, Collaborate, ODTUG conferences
- Can deliver all aspects of project
  - OBIEE expertise
  - OLAP expertise
  - Mapping expertise
  - Business expertise
  - Training