

# Oracle BI 11.1.1.6.2 BP1 New Features

**Dan Vlamis**  
**Vlamis Software Solutions**  
**816-781-2880**  
**<http://www.vlamis.com>**



# Oracle BI 11.1.1.6.2 New Features Agenda

- IOUG, BIWA and Vlami background
- Agenda for reviewing features:
  - New Oracle BI Mobile HD iPad App
  - Trellis Views and Microcharts
  - Scorecard and Strategy Management
  - New nested folders in BI Admin Tool
  - Ability to hide presentation layer objects
  - BI Server features
  - Live demo
- More information (Q&A)
- Use Chat to ask questions during the presentation

# Oracle BIWA SIG Basics

- Worldwide association of 2000+ professionals interested in Oracle Database-centric business intelligence, data warehousing, and analytical products, features and options.
- Membership is FREE – join at [oraclebiwa.org](http://oraclebiwa.org)
- Open forum to foster success in use and development of Oracle BIWA products.
- Goals: sharing best practices and novel and interesting use cases of Oracle BIWA-centric technology.
- Mission Statement and Charter at [oraclebiwa.org](http://oraclebiwa.org).
- Board of 12 or so. President Shyam Nath.
- Conferences 2007, 2008, 2010, 2011, 2012



# SUBMITTING a BIWA TechCast

- Any Oracle user or professional may submit abstracts for 45-min webcasts to IOUG Oracle BIWA SIG Community (Visit: [www.oraclebiwa.org](http://www.oraclebiwa.org))

Speaker Session Proposal

Cancel Create

Status []

Event []

\* Presentation Title

0 of 120

ABC

- Audience is technical**
  - Presenters are encouraged to include a significant amount of technical detail.
  - Live demos are strongly encouraged

# Oracle BIWA Virtual Summit – Free!

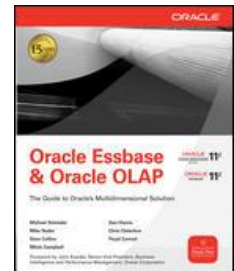
- August 15-16, 11am-5pm Eastern
- Virtual – attend from your desktop
- Topics:
  - Wed 11 Key Note - From BI to Predictive Analytics – James Taylor
  - Wed 12 Advanced Analytics – Charlie Berger
  - Wed 1 Big Data and Analytics Infrastructure – Bob Stackowiak
  - Wed 2 Big Data – Marty Gubar
  - Wed 3 Visualizing OLAP data – Dan Vlamis
  - Thur 11 Endeca – Matt Brandwein
  - Thur 12 Essbase – Jeff Shauer
  - Thur 1 OBIEE 11g Performance Tuning – Sunil Ranka
  - Thur 2 BI Publisher – Mike Donohue
  - Thur 3 Key note – See More. Act Faster. – Balaji Yelamanchili
  - Thur 4 BI Applications – Florian Schouten
- Register at <https://www1.gotomeeting.com/register/485134176> and <https://www1.gotomeeting.com/register/122161833>
- Details at <http://oraclebiwasig.blogspot.com/>





# Dan VlamiS and VlamiS Software Solutions

- VlamiS Software founded in 1992 in Kansas City, Missouri
- Developed more than 200 Oracle BI systems
- Specializes in ORACLE-based:
  - Data Warehousing
  - Business Intelligence
  - Design and integrated BI and DW solutions
  - Training and mentoring
- Expert presenter at major Oracle conferences
- [www.vlamiS.com](http://www.vlamiS.com) (blog, papers, newsletters, services)
- Developer for IRI (former owners of Oracle OLAP)
- Co-author of book “Oracle Essbase & Oracle OLAP”
- Beta tester for OBIEE 11g
- HOL Coordinator for 2012 Collaborate Conference





# OBIEE 11g Releases

- 11.1.1.3 (August 2010)
  - Huge release with major new functionality
- 11.1.1.5 (May 2011)
  - BIWA TechCast May 25: [Oracle BI 11.1.1.5 Released - Changes and New Features](#)
  - First patch release – fix bugs
  - Platform for BI Apps 7.9.6.3 to migrate to OBIEE 11g
  - Introduction of BI Mobile (iPad only)
  - OLAP integration
  - 64-bit Admin Tool, separate install
- 11.1.1.6 (February 2012)
  - BIWA TechCast Jan 29: [Oracle BI 11.1.1.6 New Features](#)
  - Platform for Exalytics (announced Oct 2011)
  - TimesTen integration
  - Fix bugs
  - New features mostly for Exalytics
  - Additional miscellaneous new features
- 11.1.1.6.2 (May 2012)
  - BI Mobile rewrite
  - Trellis Views
- 11.1.1.6.2 BP1 (June 2012)
  - Fix bugs



# New Oracle BI Mobile HD iPad App

- Requires BI Mobile
  - Generally licensed if have BI Foundation Suite
- Available as free download from Apple Store
- Not available for Android
- U/I rewrite – much nicer
- Requires BI Server 11.1.1.6.2





- New Application Shell
  - Recent, Favorites, Recent Content, Dashboards, Search, Alerts
- Expanded Interactivity and Gestural/Multi-Touch Support
  - Prompts using iPad native controls
  - Charts & Gauges just like regular web frontend (tooltips, drill, master-detail linking)
  - Map Views zoom with multi-touch support, location intelligence
- Offline Capabilities
  - Local Content – always available; refreshable on-demand
- Device GPS Integration
  - Built into Map Views



# BI Mobile – Home Page



- Alerts at a glance
- Flick through Carousel view for recently-viewed content
- Thumbnails & previews improve discoverability of content
- Quick access to Favorites, Dashboards, Local content
- Air-Print
- Rich-content email

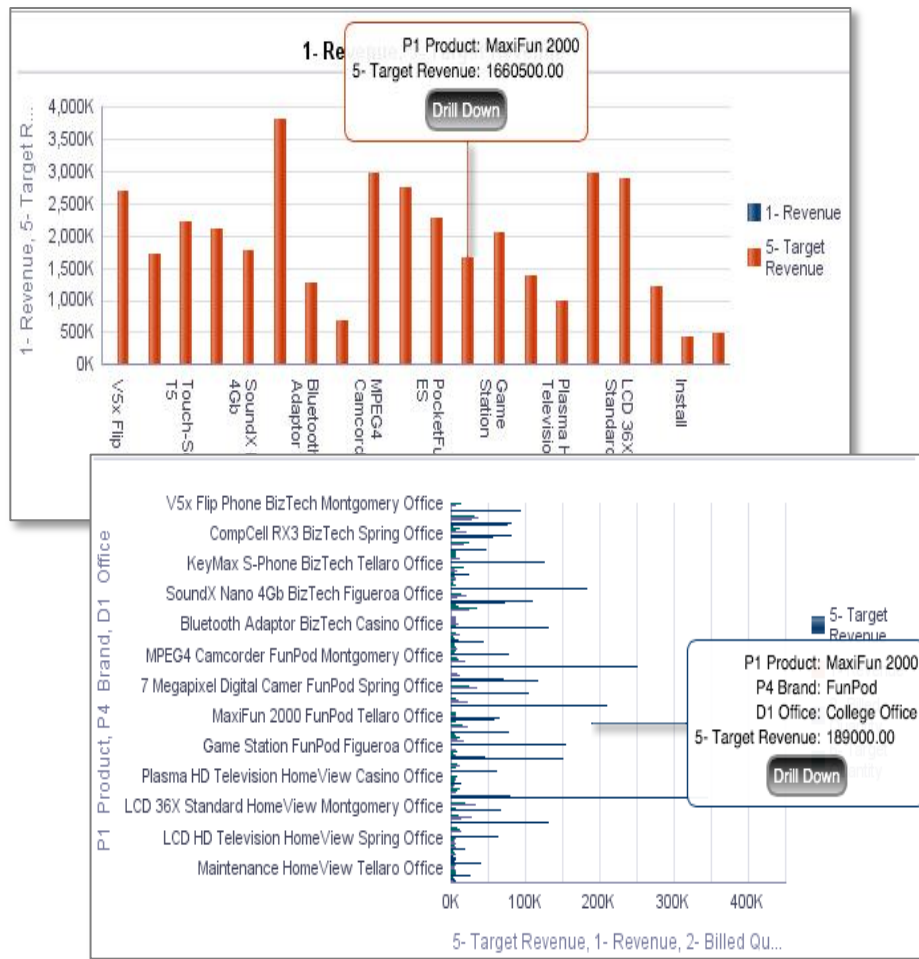
# BI Mobile – Prompts



- Part of the native BI Mobile App shell
- Single-select, multi-select
- Options for
  - Case sensitive
  - Starts, contains, is like
- Search-as-you-type
- Instant refreshes
- Collapsible prompts bar



# BI Mobile - Graphs

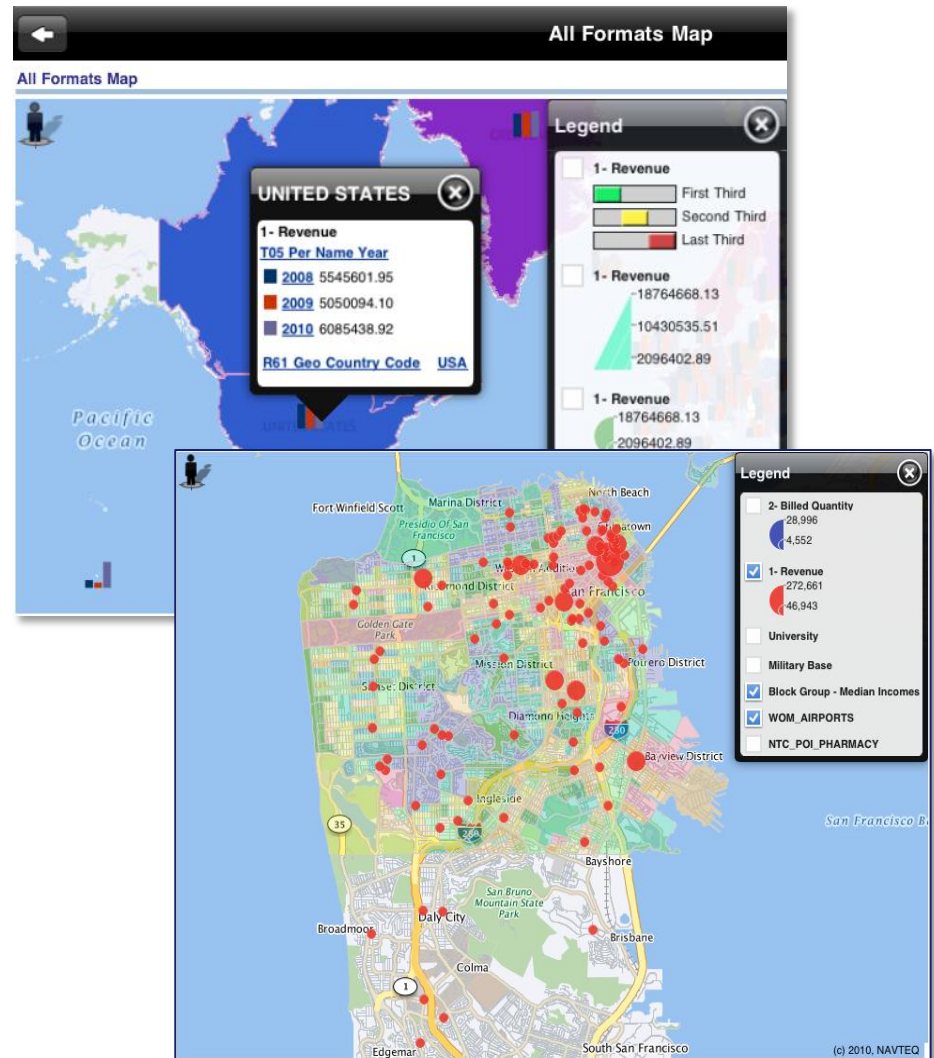


- Tooltips
- Right-click menu (via tap-and-hold)
- Drills
- Actions
- Master-Detail eventing (initiate)
- Advanced options menu
- No change to graph definition
- No configuration parameters



# BI Mobile - Maps

- Location-enabled (GPS integration)
- Pan-and-zoom via swipe and pinch gestures
- Maximize view for greater usability
- Redesigned Tooltips, interactions, Formats Panel
- Support for drills, Actions, Master-Detail linking
- Support for line-geometries (e.g., plot flight-revenue as color-coded line)
- Support for non-BI Layers





# BI Mobile – Rich Format Emails

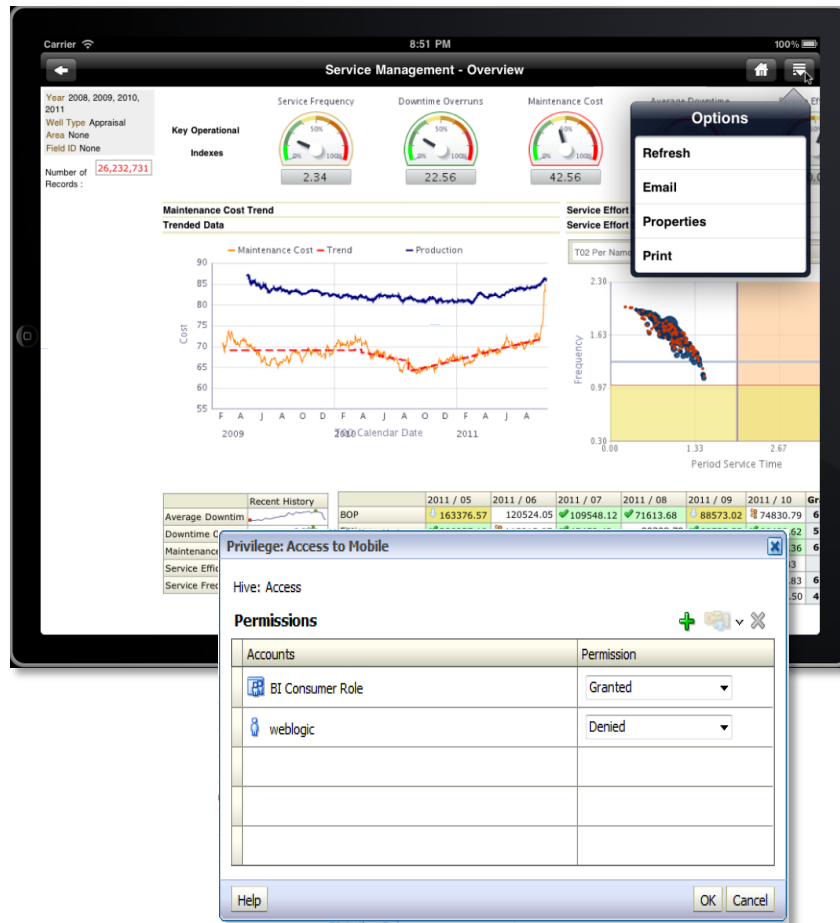
- Share content via Email
- Clickable link launches content in BI Mobile App
- Include BI content as attached .html file, or inline within email body
- App setting to include inline content







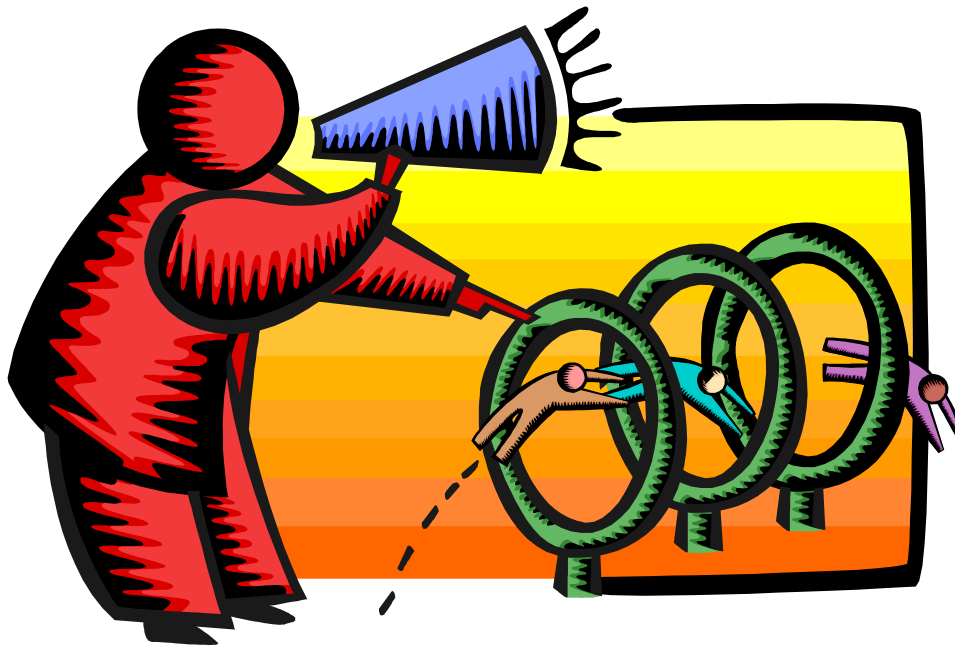
# BI Mobile - Offline



- Save content to device for offline consumption
- Refresh when online
- Share via e-mail
- Access to offline functionality controlled by user-privilege
- Refresh requires authentication
- Manage Privileges screen for access to Oracle BI Mobile



# BI Mobile - Demo







# New Trellis Views

- Does not require Exalytics but need fast Pres Server
- Can display LOTS of data in compact form
- Capable of dense visualizations
  - Great for snapshot of trending
  - Great for comparing patterns across dimension values
- Two types
  - Simple (shows full graphs per cell)
  - Advanced (sparklines – no scales per cell, separate scales)
- Need to think what you're trying to show on a trellis



# Trellis View - Simple

- Single type of inner visualization
- Common synchronized scale across all graphs
- Has scale showing by default (can turn off)
- Lots of graph types

- Vertical Bar
- Horizontal Bar
- Line
- Area
- Line-Bar
- Pie
- Scatter
- Bubble

**Layout**

**Prompts and Sections**

**Columns**

Distance Class

**Rows**

Orig Region Name

**Visualization**

View as  
Line-Bar

Group By  
Dep Week

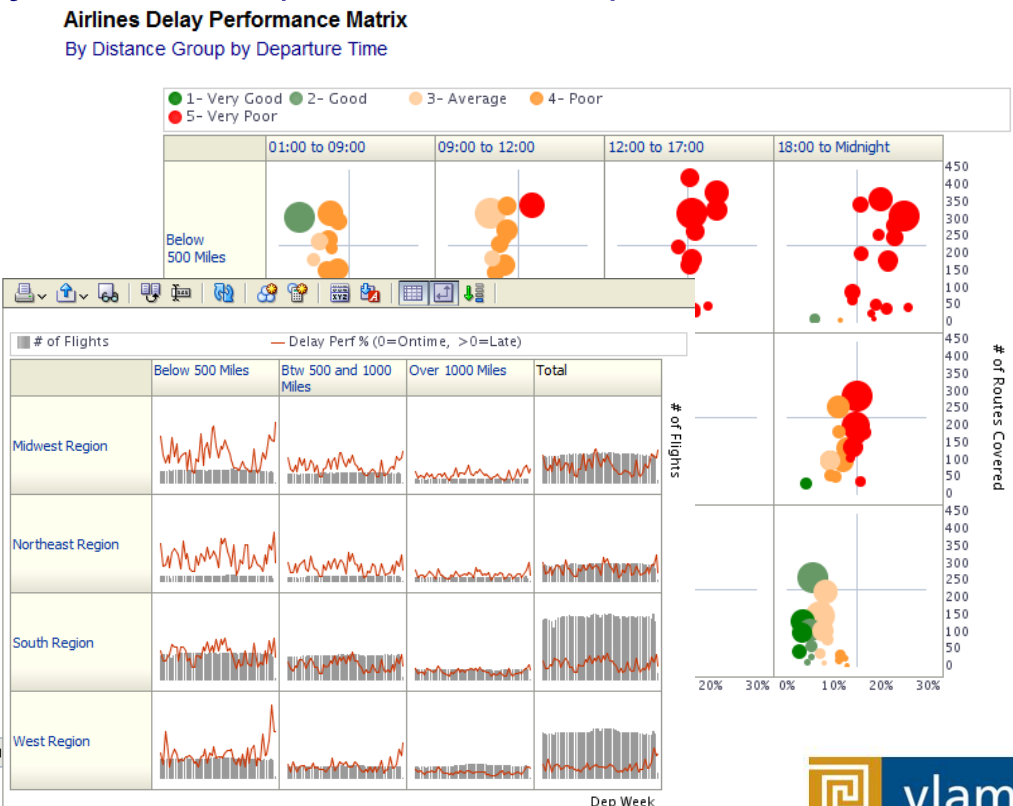
Color By  
Drop here to vary color

Bar Axis  
# of Flights

Line Axis  
Delay Perf % (0=OnTime, >0=Late)

**Excluded**

Drop here to exclude from this view





# Trellis View - Advanced

- Pivot table with numbers or graphs in cells
- Each microchart has its own scale and not shown
- Most often used to see trend lines
- No axis description, so across should be time
- Can have different visualizations for different measures

- Spark bar
- Spark line
- Spark area
- numbers

**Layout**

**Prompts and Sections**

**Columns**

Distance Class

**Rows**

Orig Region Name

**Measures**

Passengers x Miles Freight (Tons)

**Visualization**

Passengers x Miles

View as

Spark Bar

Bars

☒ Dep Month

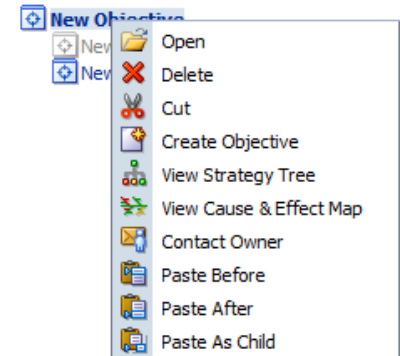
**Excluded**

Drop here to exclude from this view

	Below 500 Miles				Btw 500 and 1000 Miles			
	Passengers x Miles	Freight (Tons) x Miles	# of Flights	Air Time (Min)	Passengers x Miles	Freight (Tons) x Miles	# of Flights	Air Time (Min)
Midwest Region				100,351,347				42,514,617
Northeast Region				69,311,220				27,952,248
South Region				207,307,137				80,311,239
West Region				119,467,902				72,028,127

# Scorecard and Strategy Management

- Can reorder objects in Initiatives and Strategy panes via right-click cut and paste
- Can create smart watchlists in scorecards (in addition to KPI watchlists)
- Writeback to Essbase



5.1 Scorecards

Alerts! Custom Link Home Catalog Favorites Dashboards New Open Signed In As Michelle Arty

Strategy Tree Strategy Wheels Watchlist Cause & Effect Map Strategy Map Smart Watchlist KPI Watchlist Custom View Prompt Example

Watchlist [Return to Main Index page](#)

Filter

Relationship Type Perspective Performance Ownership

Start With Airlines Performance Browse...

Include ☒ Self  
☒ All Descendants  
☐ Children  
☐ None

Smart Watchlist

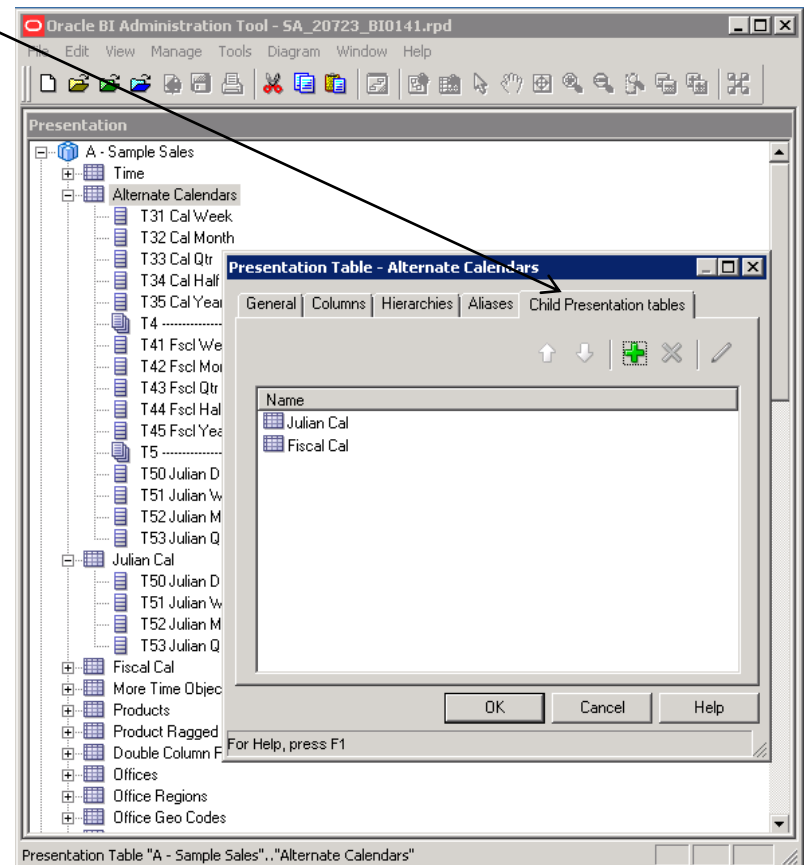
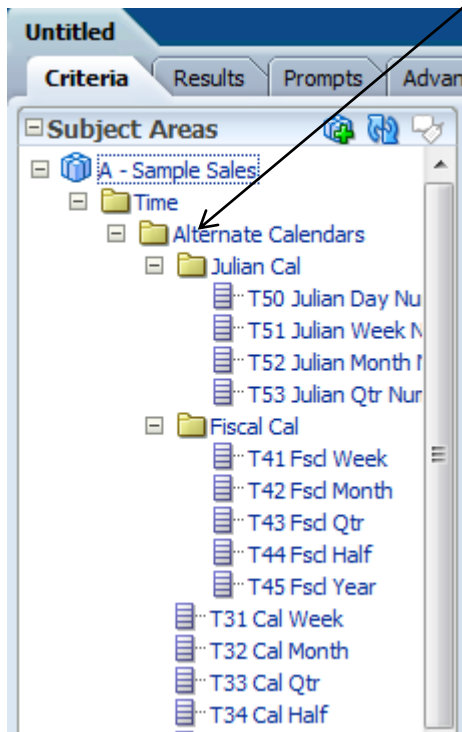
Objects View Summary: ✔ OK (15) 🟢 Good (9) 🟡 Average (0) ⚠ Warning (1) 🔴 Bad (3) 🔴 Critical (23) Total (51)

Label	Status	Trend	Actual	Target	Variance	% Variance	Change	% Change	Weight
Airlines Performance									0.0 %
✚ Increase Revenue									25 %
✚ Freight Operations	Critical								9.5238 %
🚚 Freight Load Factor	Critical		8.49	10.00	(1.51)	-15.12%			100 %
✚ Passengers Activity									66.666 %
✚ % PAX Load Factor	Critical								65.517 %
🚚 Short Routes PAX Load	Critical		78.01	100.00	(21.99)	-21.99%			9.5238 %
🚚 Med Routes Pax Load	Critical		78.01	100.00	(21.99)	-21.99%			23.809 %
🚚 Long Routes PAX Load	Critical		78.01	100.00	(21.99)	-21.99%			66.666 %

51 rows found

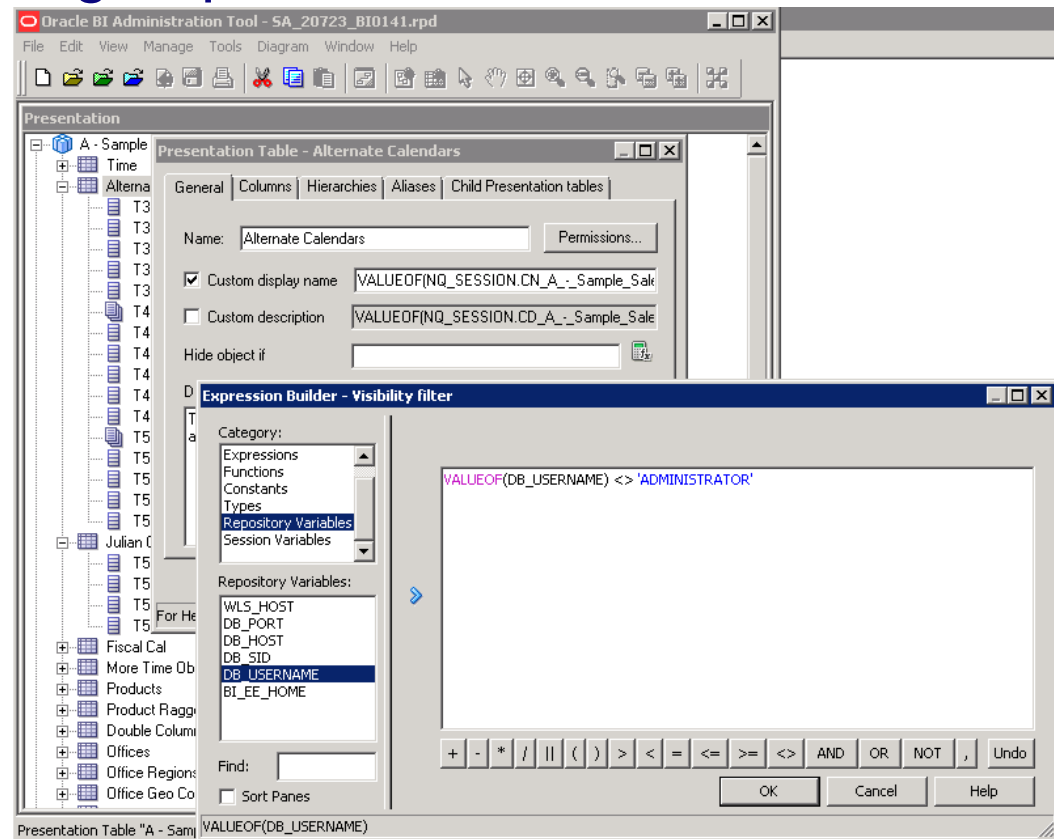
# New Nested Folders

- Was limited to one level of nesting, now multiple layers of nesting
- New Child Presentation tables tab in BI Admin tool
- Shows up indented in Answers



# Ability to Hide Presentation Objects

- Allows flexibility in creating RPDs
- Can roll out features to groups of users
- Hide object if ...
- Uses Expressions
- lots of flexibility





# BI Server Features

- New Model Check Manager for aggregates
  - Checks for level primary keys that are not unique
  - Can filter to only check where have statistics calculated
- Now continues when creating if one aggregate fails
- Can delete aggregates to delete orphan dim tables
- Can use ODBC/JDBC to get diagnostic information on BI Server
  - Can use ODBC with nqcmd to obtain statistics
  - Lots of parameters such as queries per second, total sessions, cache average hits, etc.



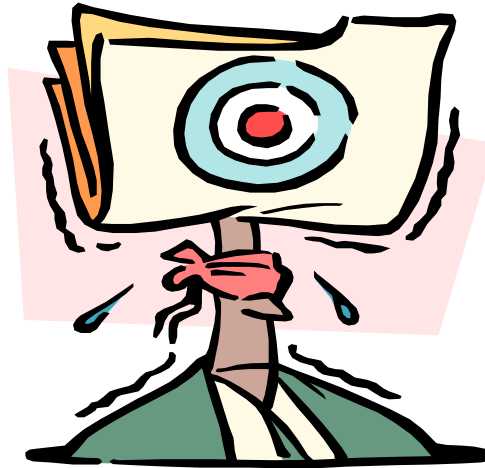
# Upgrading to 11.1.1.6.2 BP1

- Need to be on 11.1.1.6 first (.0, .1, or .2)
- Patches are cumulative from 11.1.1.6.0
- Ensure patch Exalytics with entire stripe
- Series of patches to apply to multiple products





# Questions?



More information on:

Vlami Software: [www.vlami.com](http://www.vlami.com), [dvlami@vlami.com](mailto:dvlami@vlami.com)

IOUG BIWA: [www.ioug.org](http://www.ioug.org), [www.oraclebiwa.org](http://www.oraclebiwa.org)

BIWA Virtual Summit: <http://oraclebiwasig.blogspot.com/>

SampleApp: <http://www.oracle.com/technetwork/middleware/bi-foundation/obiee-samples-167534.html>

OBIEE Doc (New Features for Oracle BI EE 11g Release 1 (11.1.1.6.2))

[http://docs.oracle.com/cd/E23943\\_01/bi.1111/e10544/whatsnew.htm#CJAIIBCB](http://docs.oracle.com/cd/E23943_01/bi.1111/e10544/whatsnew.htm#CJAIIBCB)

[http://docs.oracle.com/cd/E23943\\_01/bi.1111/e10540/whatsnew.htm#CJAEEGJH](http://docs.oracle.com/cd/E23943_01/bi.1111/e10540/whatsnew.htm#CJAEEGJH)

[http://docs.oracle.com/cd/E23943\\_01/bi.1111/e10541/whatsnew.htm#BGGGJIJH](http://docs.oracle.com/cd/E23943_01/bi.1111/e10541/whatsnew.htm#BGGGJIJH)