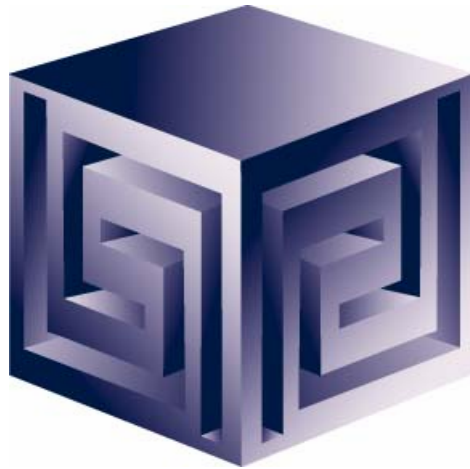


Using Oracle9i Warehouse Builder and Oracle 9i to create OLAP ready Warehouses

IOUG-2003

Paper #416



Chris Claterbos
claterbos@vlamis.com

Vlamis Software Solutions, Inc.
(816) 729-1034
<http://www.vlamis.com>

Copyright © 2003, Vlamis Software Solutions, Inc.



Vlamiis Software Solutions, Inc.

- **Founded in 1992 in Kansas City, Missouri**
- **A Member of Oracle Partner Program since 1995 along with various Oracle Beta Programs**
- **Designs and implements databases/data marts/data warehouses using RDBMS and Multidimensional tools**
- **Specializes in Data Transformation, Data Warehousing, Business Intelligence, Oracle Financials and Applications Development**
- **Founder Dan Vlamiis is former developer at Oracle-Waltham office for Sales Analyzer Application**
- **Oracle Certified Solutions Provider**



Using OWB to Build Express Databases



- ☐ What is OWB?
- ☐ Oracle 9i Integration
- ☐ The Process
- ☐ CWM Bridge
- ☐ Demonstration
- ☐ Questions



What is Oracle Warehouse Builder?

- **Integrated Tool for Data Warehousing**
- **Based on Common Warehouse Metadata Standard (OMG)**
- **Supports Design and ETL Functions**
- **Enterprise Framework for Designing and Deploying Datawarehouses and Datamarts**
- **Future integration platform for Express**



What is OWB?

Components: Overview

Components of Oracle Warehouse Builder

- ☐ Repository (CWM)
- ☐ Graphical User Interface
- ☐ Code Generator
- ☐ Integrators
- ☐ OWB Bridge



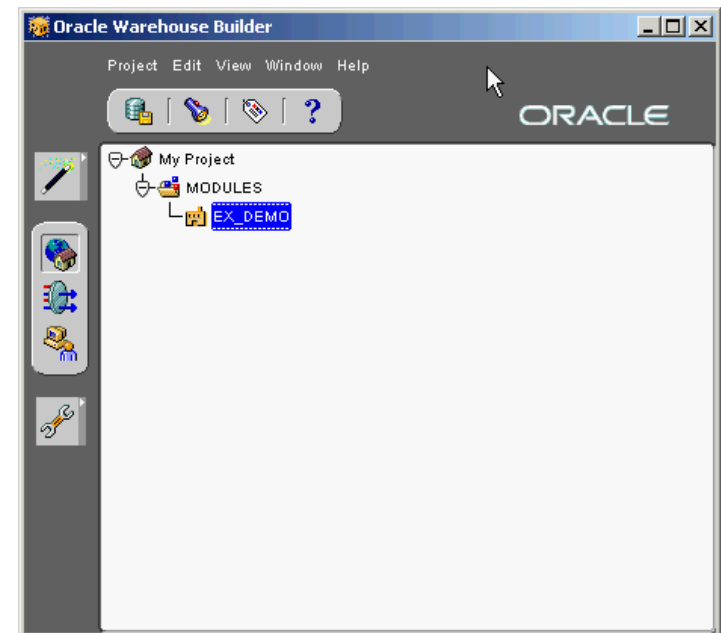
Components: *OWB Repository*

- **Based upon Common Warehouse Metadata Standard (CWM)**
- **Supports Industry Standards**
- **Oracle 8i/9i based**
- **Integration point for future products (Designer, Developer, BI Beans ...)**



Components: *OWB User Interface*

- Java Based
- Same look and feel as Designer 6i
- Run on Thin Client Platform





Components: *Code Generators*

Code Generators are provided for:

- ☐ Transformations
- ☐ DDL
- ☐ SQL Loader scripts
- ☐ User Defined transformations



Components: *Integrators*

- **Several Integrators provided**
- **Relational and non-relational support**
- **Oracle Applications Data Source**
- **SAP R/3 Data Source**
- **Discoverer**
- **Express**
- **CWM**
- **Oracle 9i OLAP**



Components: *OWB Transfer Wizard*

- **Bridging Technology to 9i OLAP, Express, CWM and Discoverer**
- **Only supports One-Way to 9i OLAP**
- **At present only supports One Way to Express RAM metadata**
- **No support for Express MOLAP**

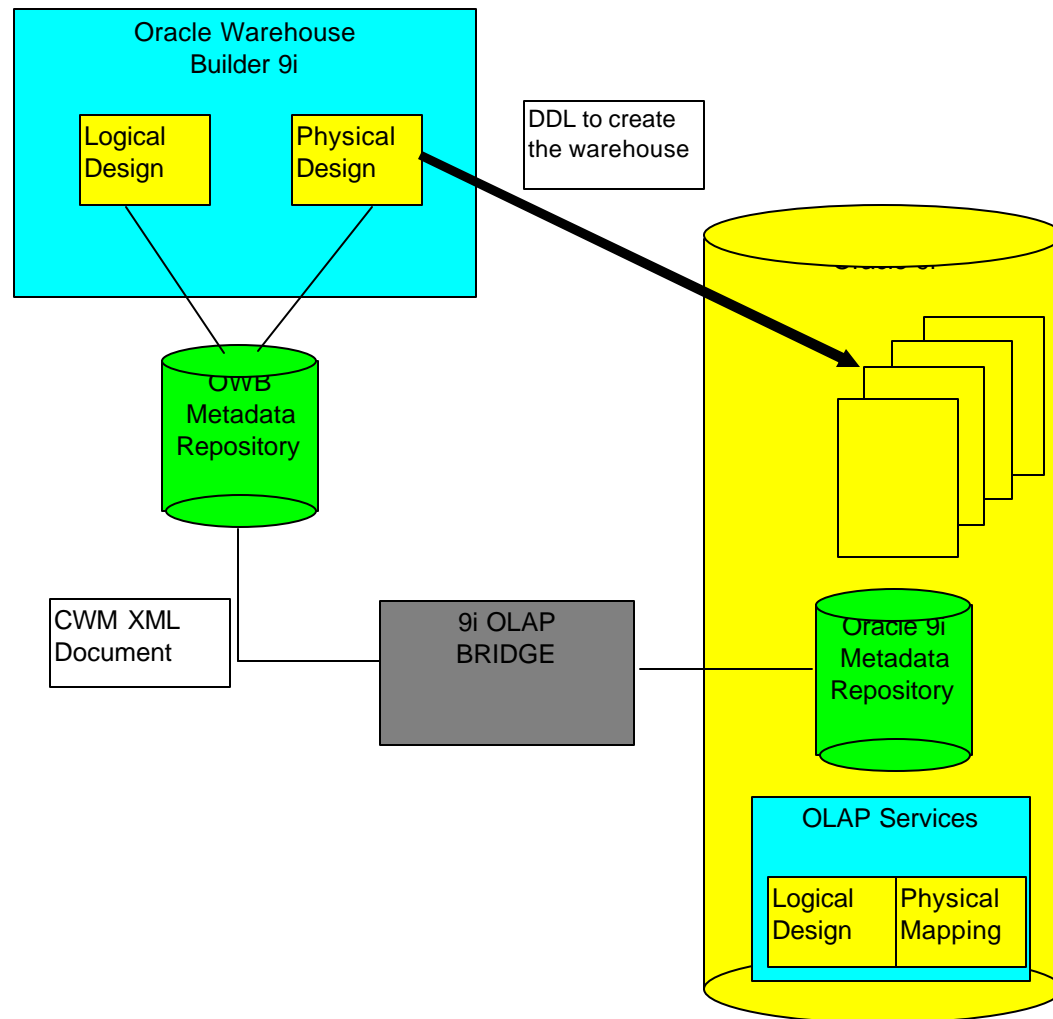


9i OLAP Integration

- **OWB Bridge transports OWB metadata to Oracle 9i OLAP Metadata**
- **Creates links to Relational Data for Facts and Dimensions**
- **User can use OEM Cube Builder to make changes**
- **Future Bridge will allow Bi-Directional Integration**



OLAP Bridge



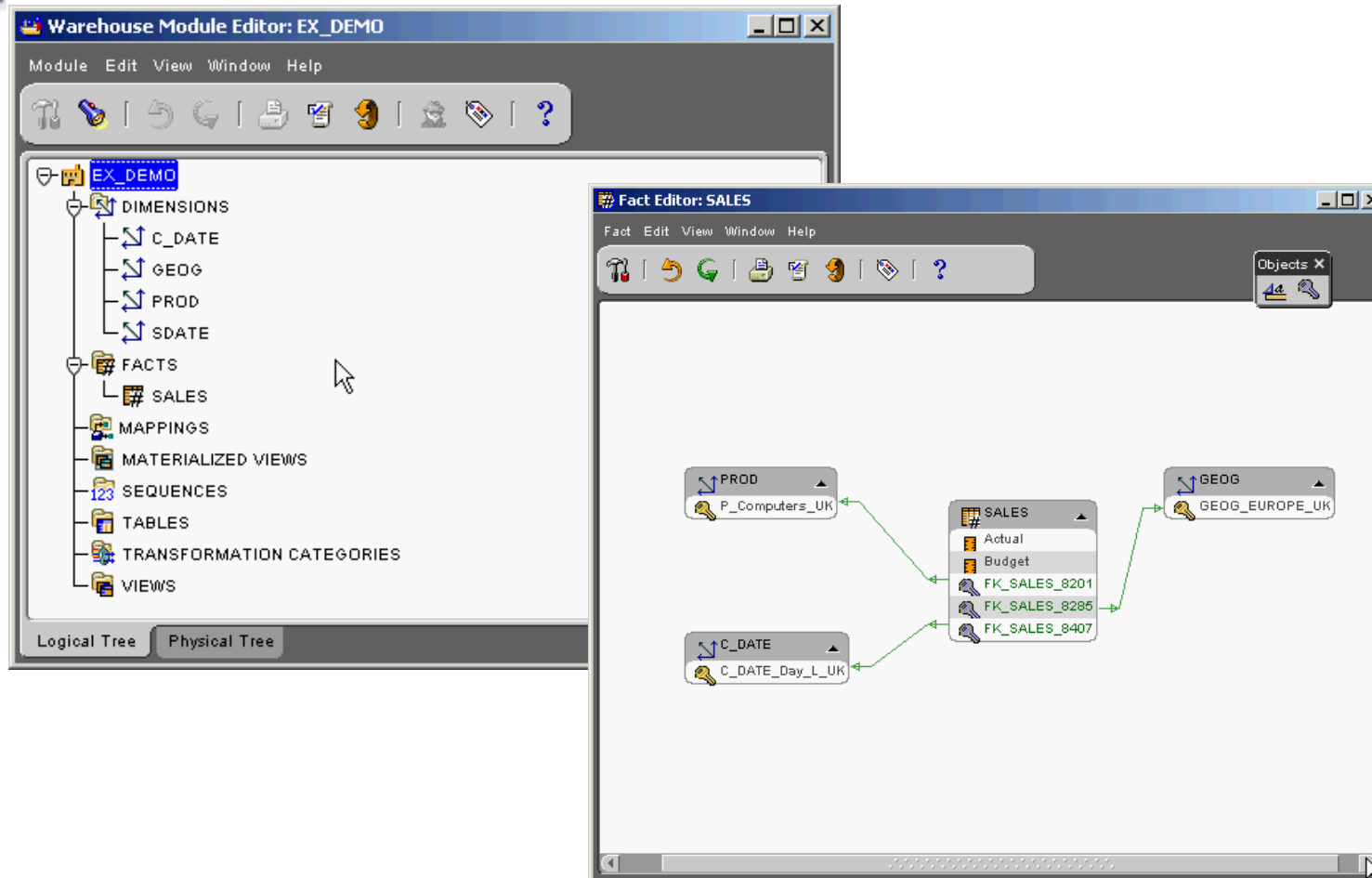


The Process

- **Design or Import Relational Schema**
 - ☐ **Define Fact Table(s)**
 - ☐ **Define Dimensions**
 - ☐ **Define Materialized Views (summary tables)**
- **Create Physical Schema**
- **Create Script for 9i OLAP**
- **Run Script**
- **View/Modify in OEM/Cube Builder**
- **Run Application**
- **Gather Statistics / Tune**

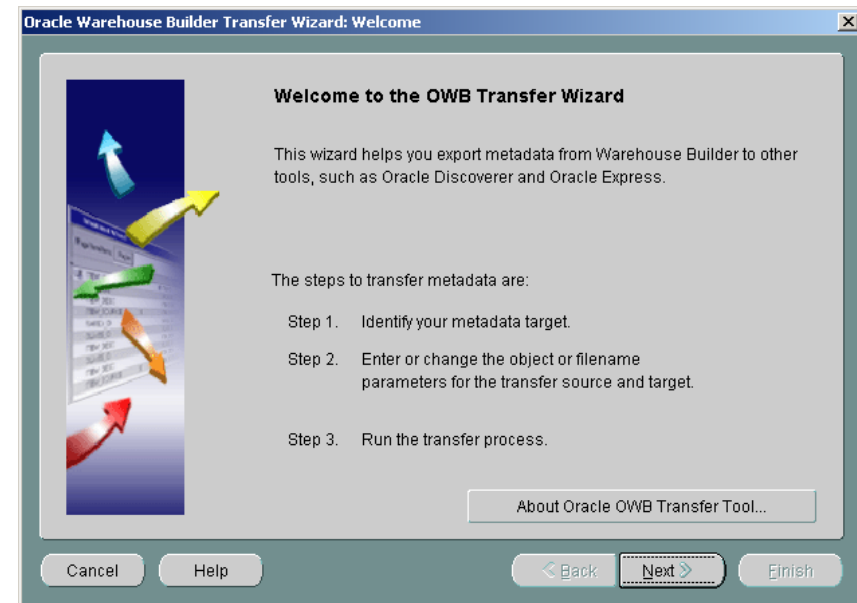
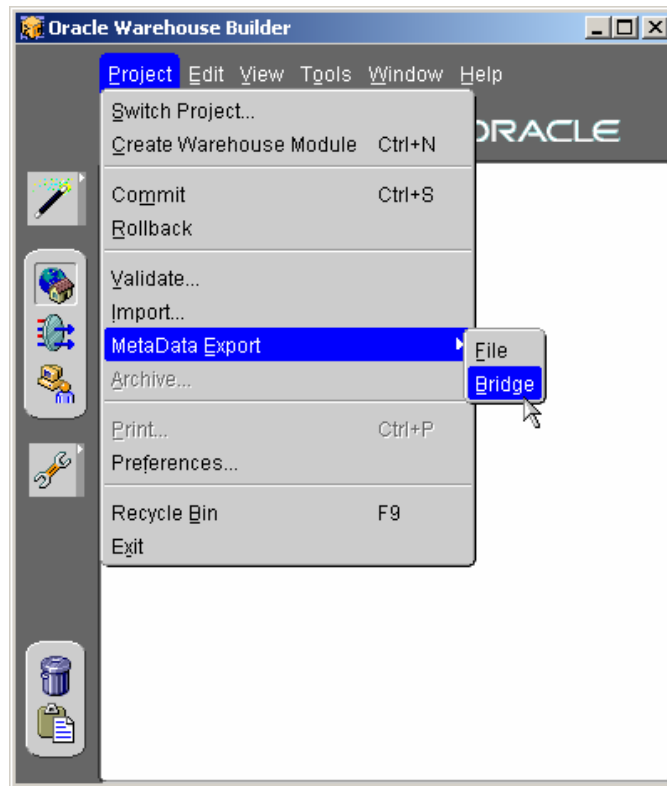


Design and Generate Schema





Metadata Export - Bridge





OWB Transfer Wizard

- **What does the OWB to 9i OLAP Transfer do?**
 - ☐ **Converts Metadata to CWM Format**
 - ☐ **Create SQL Script to update 9i OLAP Metadata**
 - ☐ **Executes Script**
 - ☐ **Allows for Building AW Cubes**
 - ☐ **Moves Data from relational to AW**



OWB Transfer – Choose Destination

Oracle Warehouse Builder Transfer Wizard, 1 of 3: Metadata Source and Target Identification

Source and Target Metadata Locations

The product that contains the metadata

From:

Select the product where you want to transfer the metadata

To:

Enter a description (optional)

Description

OMG CWM Export
Oracle OLAP Server Import
Oracle Discoverer3
Oracle Express
Oracle Discoverer4

Cancel Help < Back Next > Finish



OLAP Bridge – Transfer Parameters

Oracle Warehouse Builder Transfer Wizard, 2 of 3: Transfer Parameter Identification

Metadata Object/Filenames and Detailed Transfer Parameters

Enter or change the transfer parameter values.

Transfer Parameter Name	Transfer Parameter Value
OWB Exported Business Areas	All Business Areas
Username	BIBDEMO
Password	*****
Hostname	chris-insp4000
Port	1521
SID	orcl
PL/SQL Output File	D:\Projects\IOUGA-2002\IOUGA-2002.sql
Deploy PL/SQL in database	No
Log Level	Information

Cancel Help < Back Next > Finish



OLAP Bridge – Transfer Parameters

Oracle Warehouse Builder Transfer Wizard, 3 of 3: Summary

Confirmation of Oracle WB Transfer

From: To:

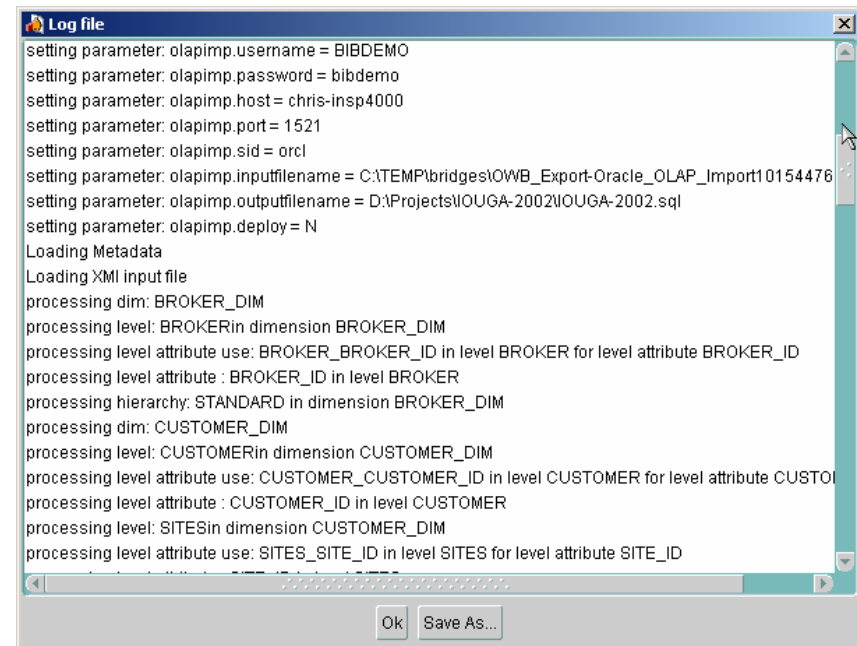
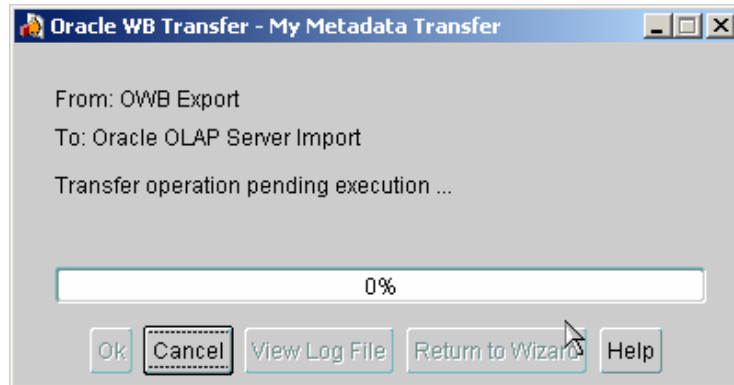
Description:

Transfer Parameter Name	Transfer Parameter Value
OWB Exported Business Areas	All Business Areas
Username	BIBDEMO
Password	*****
Hostname	chris-insp4000
Port	1521
SID	orcl
PL/SQL Output File	D:\Projects\IOUGA-2002\IOUGA-2002.sql

Click Finish to begin the transfer process.

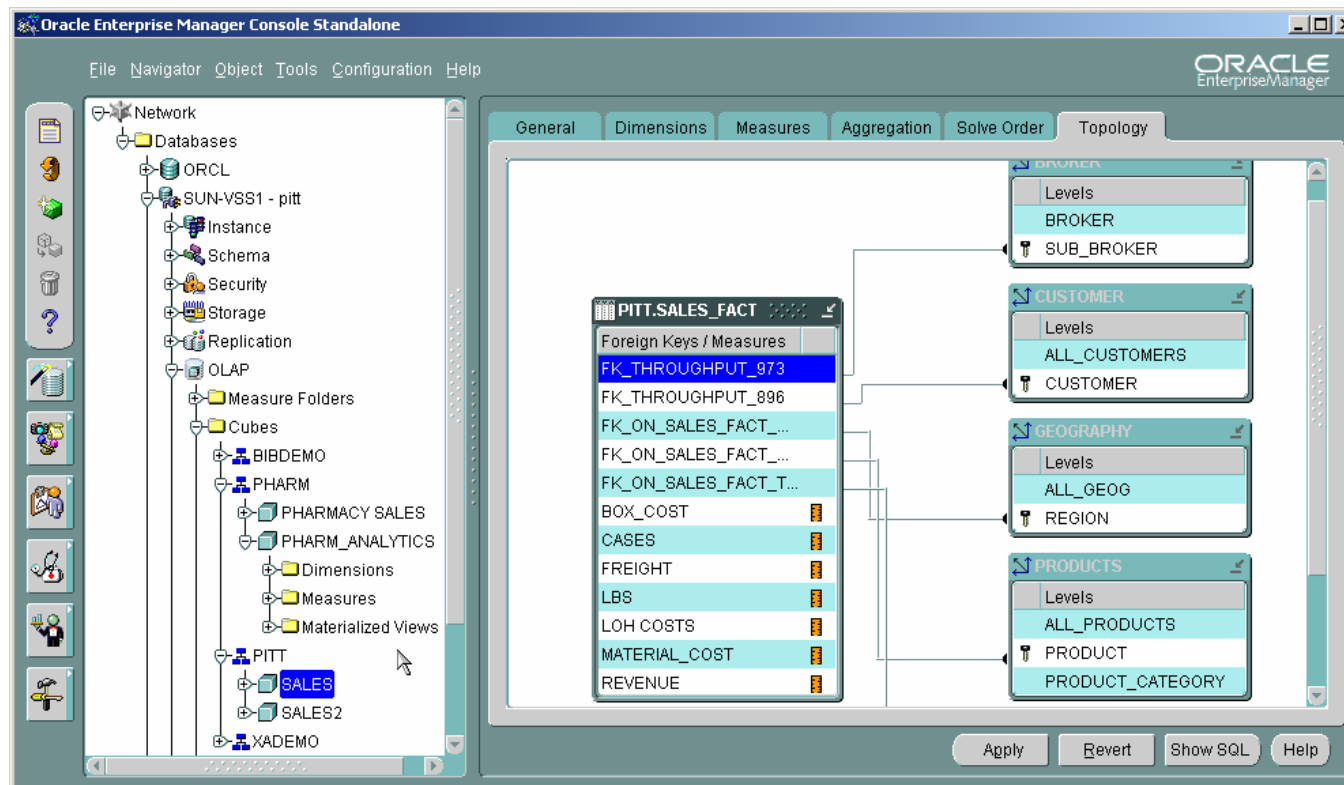


CWM Bridge – Running

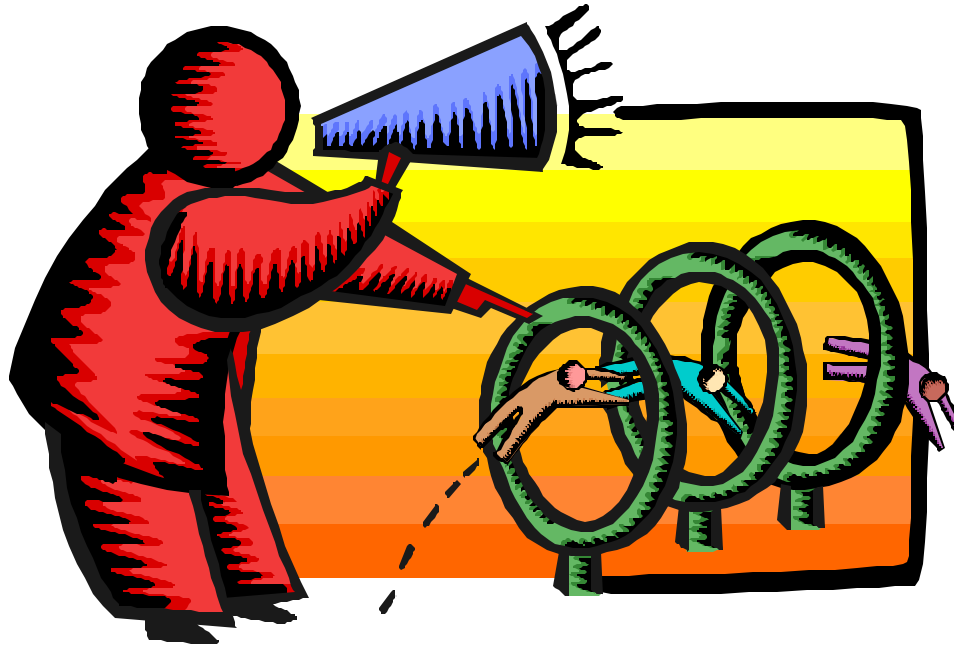




OEM Cube Builder – The Results



Demonstration

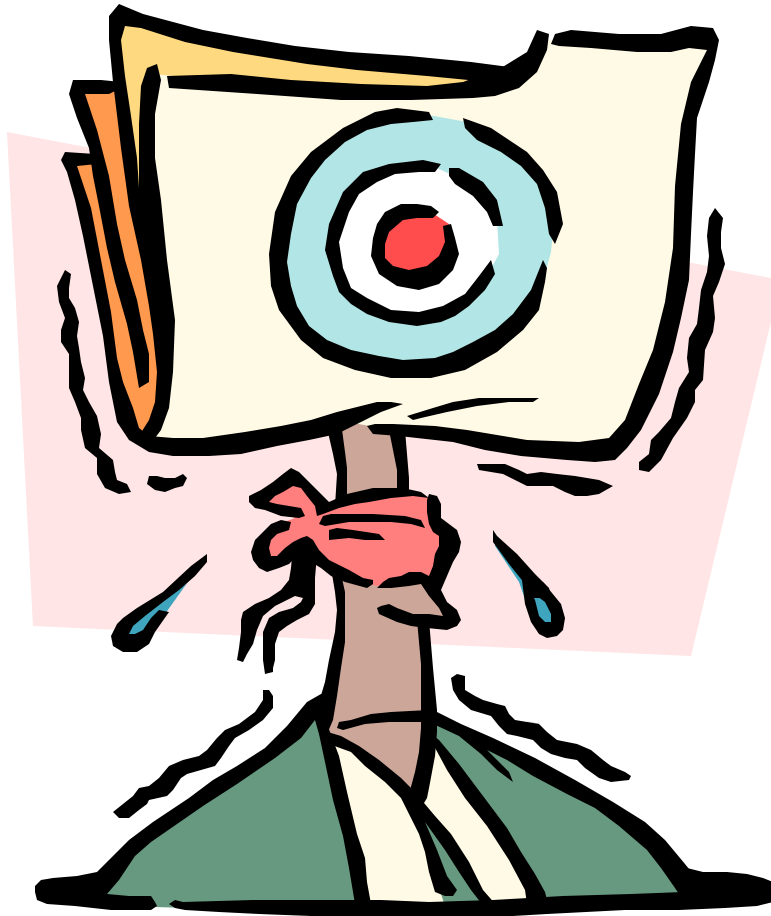




Conclusions

- **We can finally design OLAP Solutions**
- **Support for both ROLAP and MOLAP (AW)**
- **Strong Foundation for the Future**
- **Still Lacking all the Pieces**
 - ☐ **No Bi-Directional Bridge**
 - ☐ **No Migration for Express Databases**

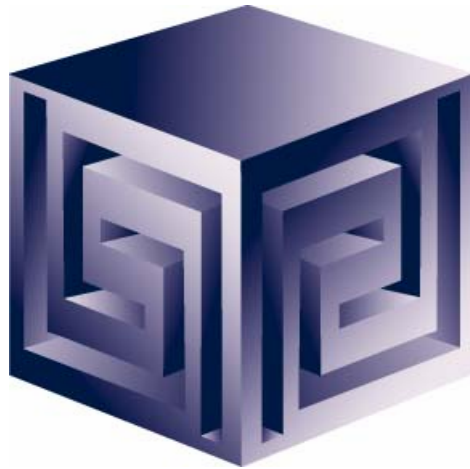
QUESTIONS?



Using Oracle9i Warehouse Builder and Oracle 9i to create OLAP ready Warehouses

IOUG-2003

Paper #416



Chris Claterbos
claterbos@vlamis.com

Vlamis Software Solutions, Inc.
(816) 729-1034
<http://www.vlamis.com>

Copyright © 2003, Vlamis Software Solutions, Inc.