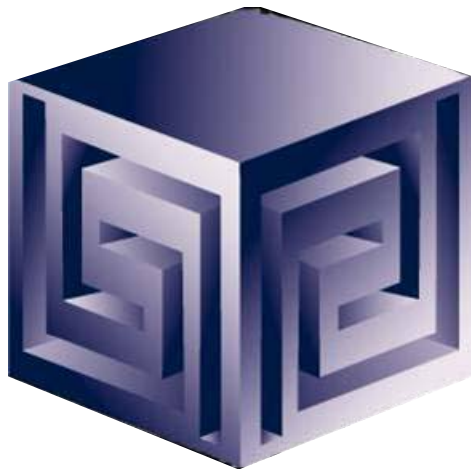


Using the Oracle9i OLAP Spreadsheet Add-In



IOUG Live! 2004

Session Q3



Dan Vlamis

dvlamis@vlamis.com

Vlamis Software Solutions, Inc.

816-781-2880

<http://www.vlamis.com>

Copyright © 2004, Vlamis Software Solutions, Inc.

©Vlamis Software Solutions, Inc.



Vlamiis Software Solutions, Inc.

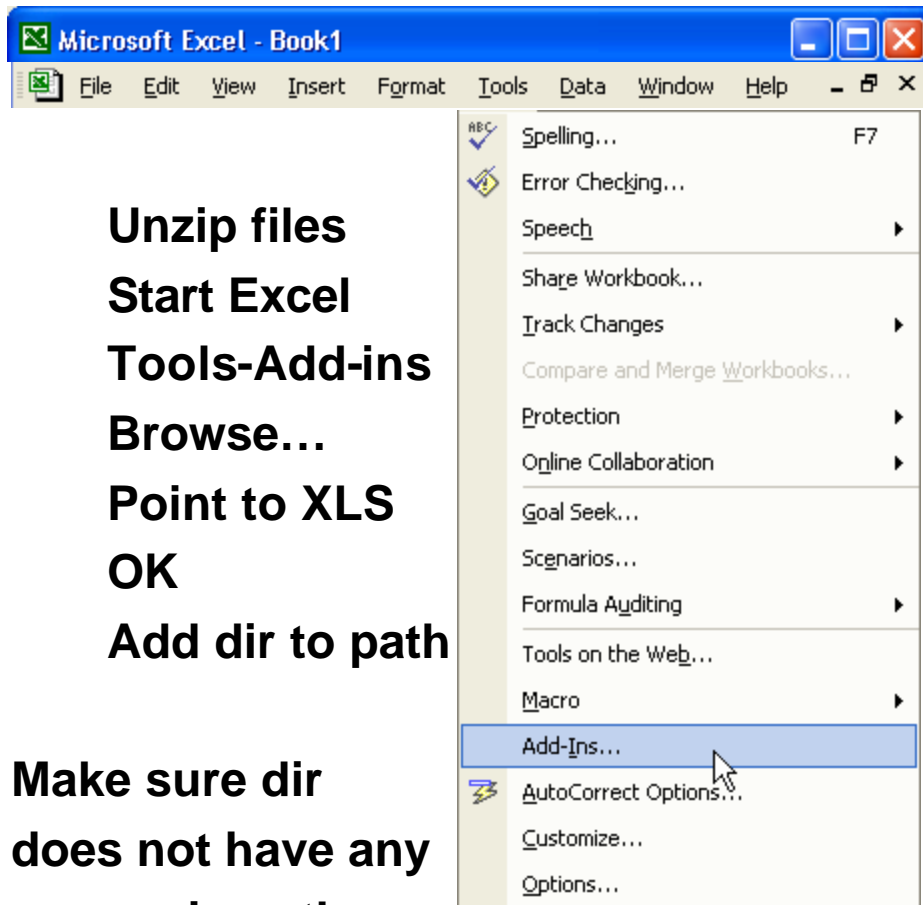
- **Founded in 1992 in Kansas City, Missouri**
- **Oracle Partner and reseller since 1995**
- **Specializes in ORACLE-based:**
 - ❑ **Data Warehousing**
 - ❑ **Business Intelligence**
 - ❑ **Data Transformation (ETL)**
 - ❑ **Web development and portals**
 - ❑ **Express-based applications**
- **Delivers**
 - ❑ **Design and integrate BI and DW solutions**
 - ❑ **Training and mentoring**
- **Expert presenter at major Oracle conferences**



Why Spreadsheet Add-in for OLAP?

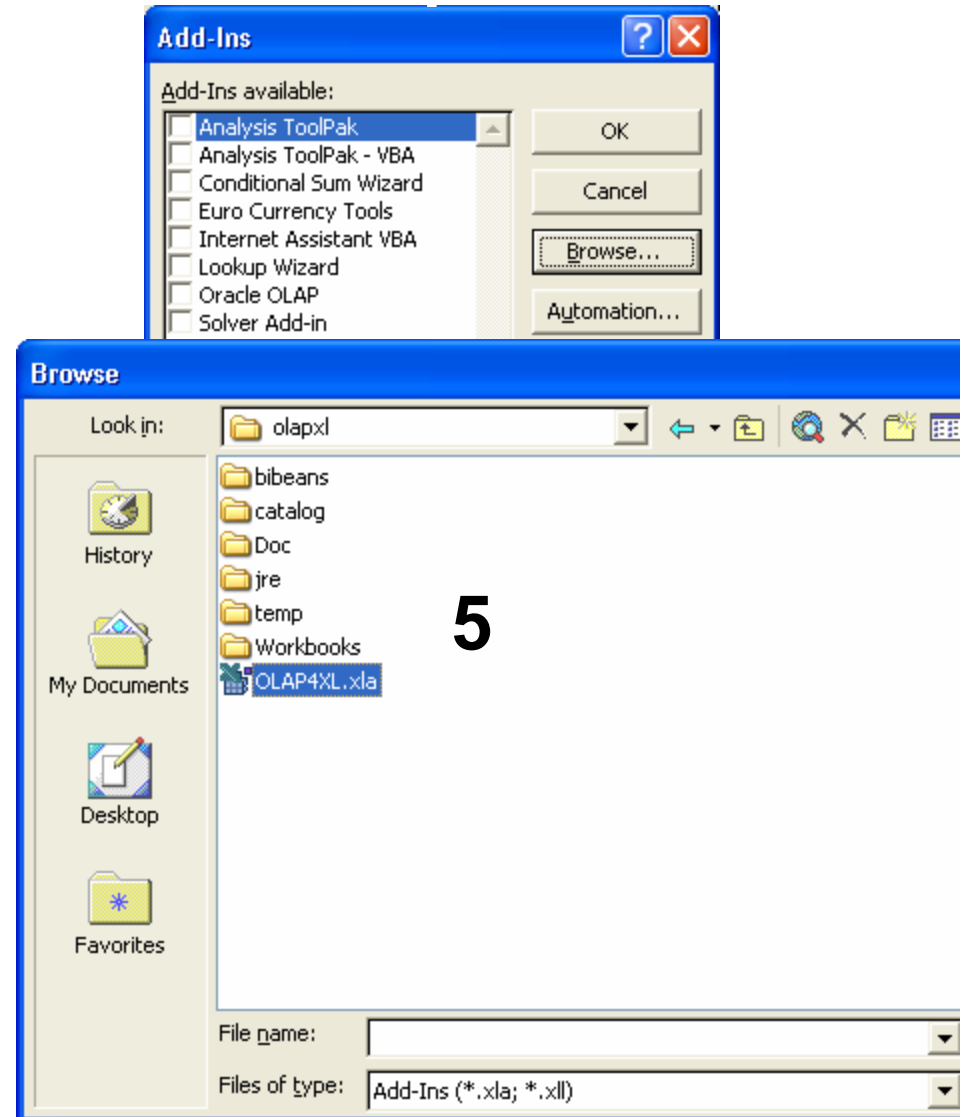
- **Limit use of OLAP as ETL tool for Excel**
- **Allows access directly from Excel to entire OLAP cube**
- **Allows access to Query Editor**
- **Allows access to Calc Builder**
- **Presents data in familiar Excel interface**
- **Breaks down perception OLAP data "closed"**
- **Users love access from Excel!**

Installation (subject to change)



Unzip files
Start Excel
Tools-Add-ins
Browse...
Point to XLS
OK
Add dir to path

Make sure dir
does not have any
spaces in path

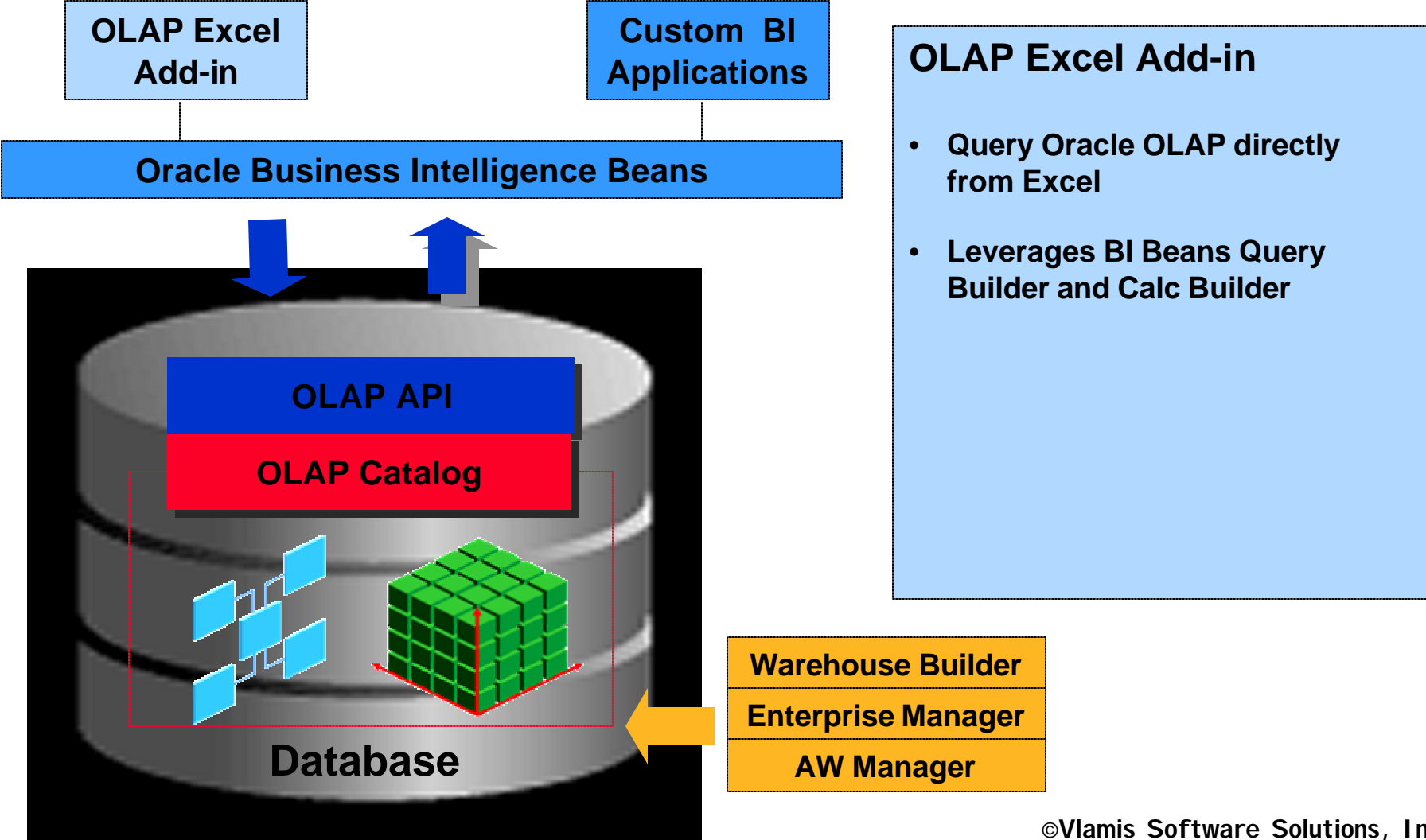




What Does Spreadsheet Add-in Do?

- **Adds OracleOLAP menu to Excel menu**
- **New Query gets data into Excel**
- **Edit Query changes selection in Excel**
- **Add New Calculation calls Calculation Wizard**
- **Allows for drilling and paging on OLAP data**
- **Saves queries between sessions**
- **Refresh Query refreshes queries from server**
- **Several options to modify behavior**

Access to All OLAP Data from Excel



Spreadsheet Add-In



The screenshot displays the Oracle OLAP Query Wizard dialog box in Microsoft Excel. The dialog has three tabs: 'Items', 'Layout', and 'Dimensions'. The 'Items' tab is active, showing a tree view of available OLAP items. The 'Selected' tab shows a list of items to be included in the query.

Available Items:

- Exception
- Top/Bottom
 - Top 10 based on Sales
 - Bottom 5.0% based on Quota
 - Making up top 3.0% of Quota
- Hierarchy
- Time/Ordinal
- Match

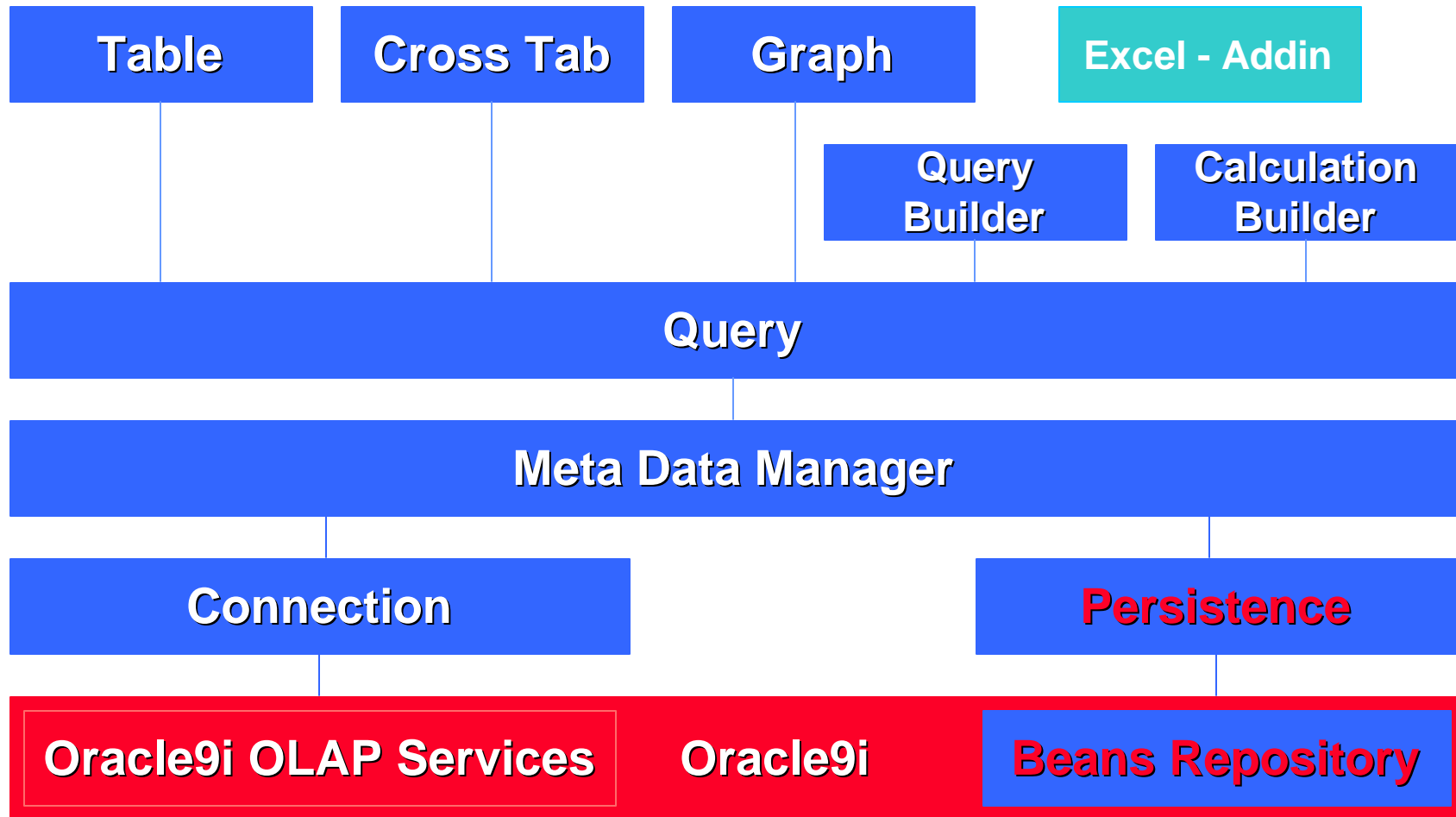
Selected Items:

- 1. Start with Equipment/Parts: Top 5 based on Sales

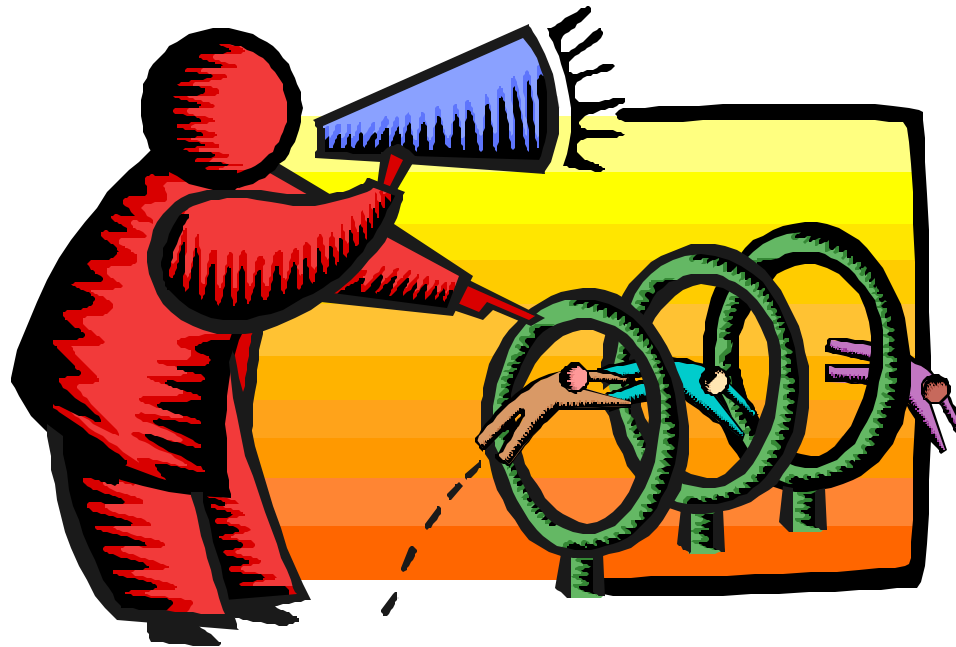
The background spreadsheet shows data for various product categories. A bar chart is visible in the background, showing sales for CD Player, Amplifier, and VHS Camcorders.



Business Intelligence Beans



Demonstration of Excel Add-In





Other Notes

- **Still in development**
- **Likely released without fanfare on OTN**
- **Watch VSS Newsletter for announcement (sign up via jclark@vlamis.com)**
- **Likely no deployment cost besides OLAP option pricing**
- **All information subject to change since not released yet**
- **First release stores queries on local machine**



Other Sessions of Interest

- **Building a BI Dashboard**
– 2:15 today
- **Developing Advanced Thin Client Applications**
– Tomorrow 10-12
- **Discoverer 10g or BI Beans**
– Wed 2:15
- **Managing Oracle OLAP**
– Thurs 8:30

QUESTIONS?

